

中国认可
国际互认
检测
TESTING
CNAS L4595

TEST REPORT
BS EN 62368-1
Audio/video, information and communication technology equipment
Part 1: Safety requirements

Report Number.....: LCSA09294075S

Date of issue.....: 2024-11-04

Total number of pages.....: 90

Name of Testing Laboratory preparing the Report.....: Shenzhen LCS Compliance Testing Laboratory Ltd.

Applicant's name.....: Suparo Industries Ltd

Address.....: Weir Street, Blackburn, BB2 2AN, United Kingdom

Test specification:

Standard.....: BS EN IEC 62368-1:2020+A11:2020

Test procedure.....: Type test

Non-standard test method.....: N/A

TRF template used.....: IECEE OD-2020-F1:2021, Ed.1.4

Test Report Form No.....: TRF-4-S-132 A/0

Test Report Form(s) Originator.....: UL(US)

Master TRF.....: Dated 2022-04-14

Copyright © 2022 IEC System of Conformity Assessment Schemes for Electrotechnical Equipment and Components (IECEE System). All rights reserved.

This publication may be reproduced in whole or in part for non-commercial purposes as long as the IECEE is acknowledged as copyright owner and source of the material. IECEE takes no responsibility for and will not assume liability for damages resulting from the reader's interpretation of the reproduced material due to its placement and context.


General disclaimer:

The test results presented in this report relate only to the object tested.
This report shall not be reproduced, except in full, without the written approval of the Issuing Testing Laboratory. The authenticity of this Test Report and its contents can be verified by contacting the Testing Laboratory, responsible for this Test Report.



Shenzhen LCS Compliance Testing Laboratory Ltd.
Add: Room 101, 201, Building A and Room 301, Building C, Juji Industrial Park, Yabianxueziwei, Shajing Street, Bao'an District, Shenzhen, Guangdong, China
Tel: +(86) 0755-8259 1330 | E-mail: webmaster@lcs-cert.com | www.lcs-cert.com
Scan code to check authenticity



Test item description.....:	140W Triple USB-C Wall Charger
Trade Mark(s).....:	
Manufacturer.....:	Foshan G-Power Technology Co., LTD B4-601, 602, 603, 604, 702, 704, SXC, No. 1 Fusheng West Road, Dafuji Community, Ronggui Street, Shunde District, Foshan City, 528300, Guangdong Province, China
Model/Type reference.....:	S140W
Ratings.....:	See label for details on page 4

Responsible Testing Laboratory (as applicable), testing procedure and testing location(s):

<input checked="" type="checkbox"/>	Testing Laboratory:	Shenzhen LCS compliance testing laboratory Ltd.	
	Testing location/ address.....:	Room 101, 201, Building A and Room 301, Building C, Juji Industrial Park, Yabianxueziwei, Shajing Street, Bao'an District, Shenzhen, Guangdong, China	
	Prepared by.....:	Mona Tao Project Handler	
	Checked by.....:	Benson Kuai Reviewer	
	Approved by.....:	Hart Qiu Technical Director	



Shenzhen LCS Compliance Testing Laboratory Ltd.
 Add: Room 101, 201, Building A and Room 301, Building C, Juji Industrial Park, Yabianxueziwei, Shajing Street, Bao'an District, Shenzhen, Guangdong, China
 Tel: +(86) 0755-8259 1330 | E-mail: webmaster@lcs-cert.com | www.lcs-cert.com
 Scan code to check authenticity

**List of Attachments (including a total number of pages in each attachment):**

- Attachment No. 1: Britain group differences and national differences.
- Attachment No. 2: Photo Documentation

Summary of testing:**Tests performed (name of test and test clause):**

The submitted samples were found to comply with the requirements of:

Electrical safety:

- BS EN IEC 62368-1:2020+A11:2020

Testing location:

Shenzhen LCS Compliance Testing Laboratory Ltd.
Room 101, 201, Building A and Room 301, Building C, Juji Industrial Park, Yabianxueziwei, Shajing Street, Bao'an District, Shenzhen, Guangdong, China

Summary of compliance with National Differences:**List of countries addressed: National Differences and Group Differences as refer to Attachment No. 1.**

- The product fulfils the requirements of **BS EN IEC 62368-1:2020+A11:2020**

Use of uncertainty of measurement for decisions on conformity (decision rule):

No decision rule is specified by the IEC standard, when comparing the measurement result with the applicable limit according to the specification in that standard. The decisions on conformity are made without applying the measurement uncertainty ("simple acceptance" decision rule, previously known as "accuracy method").

Other: (to be specified, for example when required by the standard or client, or if national accreditation requirements apply)

Information on uncertainty of measurement:

The uncertainties of measurement are calculated by the laboratory based on application of criteria given by OD-5014 for test equipment and application of test methods, decision sheets and operational procedures of IECEE.

IEC Guide 115 provides guidance on the application of measurement uncertainty principles and applying the decision rule when reporting test results within IECEE scheme, noting that the reporting of the measurement uncertainty for measurements is not necessary unless required by the test standard or customer.

Calculations leading to the reported values are on file with the NCB and testing laboratory that conducted the testing.





Copy of marking plate:

The artwork below may be only a draft. The use of certification marks on a product must be authorized by the respective NCBs that own these marks.

suparo

140W Triple USB-C Wall Charger
Model: S140W
Input: AC 100-240V 50/60Hz 3.0A
USB-C1 Output: 5.0V ≡ 3.0A, 9.0V ≡ 3.0A, 12.0V ≡ 3.0A,
15.0V ≡ 3.0A, 20.0V ≡ 3.25A, 28V ≡ 5A
PPS: 4V-11V ≡ 5A, 4V-21V ≡ 4A
USB-C2 Output: 5.0V ≡ 3.0A, 9.0V ≡ 3.0A, 12.0V ≡ 3.0A,
15.0V ≡ 3.0A, 20.0V ≡ 3.25A
PPS: 4V-11V ≡ 5A, 4V-21V ≡ 3A
USB-C3 Output: 5.0V ≡ 3.0A, 9.0V ≡ 3.0A, 12.0V ≡ 2.5A,
20.0V ≡ 1.5A Max 30W
PPS: 4V-11V ≡ 3A
Suparo Industries Ltd.
Weir Street, Blackburn, BB2
2AN, United Kingdom
Made in China
Manufacturer: Foshan G-Power Technology Co.,LTD
B4-601, 602, 603, 604, 702, 704, SXC, No. 1 Fusheng West Road, Dafuji Community, Ronggui Street,
Shunde District, Foshan City, 528300, Guangdong Province, China

30W

100W

140W



Note:

1. For the final production samples, the additional markings which do not give rise to misunderstanding may be added.
2. The height of CE and UKCA symbol ≥ 5.0mm, the height of WEEE symbol ≥ 7.0mm.
3. The importer information should be marked in label when this product import to European Marketing.





Test item particulars:

Product group : end product built-in component

Classification of use by..... : Ordinary person
 Instructed person
 Skilled person
 Children likely to be present

Supply connection..... : AC Mains DC Mains
 External Circuit - not Mains connected
- ES1 ES2 ES3

Supply tolerance : +10%/-10%
 +20%/-15%
 + ___ %/ - ___ %
 None

Supply connection – type : pluggable equipment type A -
 non-detachable supply cord
 appliance coupler
 direct plug-in
 pluggable equipment type B -
 non-detachable supply cord
 appliance coupler
 permanent connection
 mating connector
 other: Not directly connected to the mains

Considered current rating of protective device..... : 16A
location: building; equipment; N/A

Equipment mobility..... : movable hand-held transportable
 direct plug-in stationary for building-in
 wall/ceiling-mounted SRME/rack-mounted
 other:

Overtoltage category (OVC) : OVC I OVC II OVC III
 OVC IV other:

Class of equipment : Class I Class II Class III
 Not classified

Special installation location : N/A restricted access area
 outdoor location

Pollution degree (PD) : PD 1 PD 2 PD 3

Manufacturer’s specified T_{ma}..... : 25 °C Outdoor: minimum °C

IP protection class : IPX0 IP ___

Power systems : TN TT IT - ___ V L-L
 not AC mains

Altitude during operation (m) : 2000 m or less _____ m



Shenzhen LCS Compliance Testing Laboratory Ltd.
Add: Room 101, 201, Building A and Room 301, Building C, Juji Industrial Park, Yabianxueziwei, Shajing Street,
Bao'an District, Shenzhen, Guangdong, China
Tel: +(86) 0755-8259 1330 | E-mail: webmaster@lcs-cert.com | www.lcs-cert.com
Scan code to check authenticity



Altitude of test laboratory (m)	<input checked="" type="checkbox"/> 500 m or less	<input type="checkbox"/> _____ m
Mass of equipment (kg)	<input checked="" type="checkbox"/> 0.396 kg	

Possible test case verdicts:

- test case does not apply to the test object.... : N/A
- test object does meet the requirement..... : P (Pass)
- test object does not meet the requirement.... : F (Fail)

Testing:

Date of receipt of test item..... : 2024-10-08

Date (s) of performance of tests..... : 2024-10-08 to 2024-11-01

General remarks:

"(See Enclosure #)" refers to additional information appended to the report.
 "(See appended table)" refers to a table appended to the report.

Throughout this report a comma / point is used as the decimal separator.
 The applicant and manufacturer information, product name, model, trademark and other information in this report are all provided by the applicant, and this laboratory is not responsible for verifying its authenticity.

These marked "☆" test clauses are not within the scope of CNAS recognition.

Manufacturer's Declaration per sub-clause 4.2.5 of IEC60335-1:

The application for obtaining a CB Test Certificate includes more than one factory location and a declaration from the Manufacturer stating that the sample(s) submitted for evaluation is (are) representative of the products from each factory has been provided..... :	<input type="checkbox"/> Yes <input checked="" type="checkbox"/> Not applicable
--	--

When differences exist; they shall be identified in the General product information section.

Name and address of factory (ies)..... : Same as Manufacturer

General product information and other remarks:

1. The product is class II 140W Triple USB-C Wall Charger intended to use for information technology equipment or Audio and Video equipment.
2. The maximum ambient temperature is 25°C.
3. This equipment is intended to operate in an area which has an elevation of maximum 2000m.





OVERVIEW OF ENERGY SOURCES AND SAFEGUARDS				
Clause	Possible Hazard			
5	Electrically-caused injury			
Class and Energy Source (e.g. ES3: Primary circuit)	Body Part (e.g. Ordinary)	Safeguards		
		B	S	R
ES3: Primary circuits supplied by a.c. mains supply	Ordinary	N/A	N/A	Transformer, Y-capacitor, Enclosure Optocoupler
ES1: Secondary connector	Ordinary	N/A	N/A	N/A
6	Electrically-caused fire			
Class and Energy Source (e.g. PS2: 100 Watt circuit)	Material part (e.g. Printed board)	Safeguards		
		B	1 st S	2 nd S
PS3: All primary circuits	All combustible materials within equipment fire enclosure	Equipment safeguards (no ignition)	Equipment safeguards and Fire Enclosure	Enclosure
PS3: Secondary connector	All combustible materials within equipment fire enclosure	Equipment safeguards (no ignition)	Equipment safeguard	N/A
7	Injury caused by hazardous substances			
Class and Energy Source (e.g. Ozone)	Body Part (e.g., Skilled)	Safeguards		
		B	S	R
N/A	N/A	N/A	N/A	N/A
8	Mechanically-caused injury			
Class and Energy Source (e.g. MS3: Plastic fan blades)	Body Part (e.g. Ordinary)	Safeguards		
		B	S	R
MS1: Edges and corners	Ordinary	N/A	N/A	N/A
MS1: less than 7kg (Mass of the unit)	Ordinary	N/A	N/A	N/A
9	Thermal burn			
Class and Energy Source (e.g. TS1: Keyboard caps)	Body Part (e.g., Ordinary)	Safeguards		
		B	S	R
TS1: Enclosure	Ordinary	N/A	N/A	N/A
10	Radiation			
Class and Energy Source (e.g. RS1: PMP sound output)	Body Part (e.g., Ordinary)	Safeguards		
		B	S	R
RS1: LED indicator	Ordinary	N/A	N/A	N/A
Supplementary Information: “B” – Basic Safeguard; “S” – Supplementary Safeguard; “R” – Reinforced Safeguard				





ENERGY SOURCE DIAGRAM

Optional. Manufacturers are to provide the energy sources diagram identify declared energy sources and identifying the demarcations are between power sources. Recommend diagram be provided included in power supply and multipart systems.

Insert diagram below. Example diagram designs are; Block diagrams; image(s) with layered data; mechanical drawings

ES3 PS3 MS1 TS1 RS1





IEC 62368-1			
Clause	Requirement + Test	Result - Remark	Verdict
4	GENERAL REQUIREMENTS		P
4.1.1	Acceptance of materials, components and subassemblies	See appended table 4.1.2	P
4.1.2	Use of components	Components which are certified to IEC and/or national standards are used correctly within their ratings. Components not covered by IEC standards are tested under the conditions present in the equipment. See also Annex G	P
4.1.3	Equipment design and construction	Evaluation of safeguards regarding limiting the outputs to fulfill ES1 and protection in regard to risk of spread of fire, mechanical and thermal burn injury considered.	P
4.1.4	Specified ambient temperature for outdoor use (°C) :	Indoor use only	N/A
4.1.5	Constructions and components not specifically covered		N/A
4.1.8	Liquids and liquid filled components (LFC)		N/A
4.1.15	Markings and instructions	(See Annex F)	P
4.4.3	Safeguard robustness		P
4.4.3.1	General		P
4.4.3.2	Steady force tests	(See Annex T.2, T.4)	P
4.4.3.3	Drop tests	(See Annex T.7)	P
4.4.3.4	Impact tests		N/A
4.4.3.5	Internal accessible safeguard tests	No such safeguard.	N/A
4.4.3.6	Glass impact tests	No such glass used.	N/A
4.4.3.7	Glass fixation tests		N/A
	Glass impact test (1J)		N/A
	Push/pull test (10 N)		N/A
4.4.3.8	Thermoplastic material tests	(See Annex T.8)	P
4.4.3.9	Air comprising a safeguard		N/A
4.4.3.10	Accessibility, glass, safeguard effectiveness		P
4.4.4	Displacement of a safeguard by an insulating liquid		N/A
4.4.5	Safety interlocks		N/A
4.5	Explosion		N/A





IEC 62368-1			
Clause	Requirement + Test	Result - Remark	Verdict
4.5.1	General		N/A
4.5.2	No explosion during normal/abnormal operating condition	No explosion	N/A
	No harm by explosion during single fault conditions		N/A
4.6	Fixing of conductors		P
	Fix conductors not to defeat a safeguard		P
	Compliance is checked by test..... :	10N test was applied to internal components.	P
4.7	Equipment for direct insertion into mains socket-outlets		P
4.7.2	Mains plug part complies with relevant standard... :		P
4.7.3	Torque (Nm)..... :	0.046	P
4.8	Equipment containing coin/button cell batteries		N/A
4.8.1	General	No coin/button cell batteries used.	N/A
4.8.2	Instructional safeguard..... :		N/A
4.8.3	Battery compartment door/cover construction		N/A
	Open torque test		N/A
4.8.4.2	Stress relief test		N/A
4.8.4.3	Battery replacement test		N/A
4.8.4.4	Drop test		N/A
4.8.4.5	Impact test		N/A
4.8.4.6	Crush test		N/A
4.8.5	Compliance		N/A
	30N force test with test probe		N/A
	20N force test with test hook		N/A
4.9	Likelihood of fire or shock due to entry of conductive object		N/A
4.10	Component requirements		N/A
4.10.1	Disconnect Device		N/A
4.10.2	Switches and relays		N/A

5	ELECTRICALLY-CAUSED INJURY		P
5.2	Classification and limits of electrical energy sources		P
5.2.2	ES1, ES2 and ES3 limits	(See appended table 5.2)	P
5.2.2.2	Steady-state voltage and current limits..... :	(See appended table 5.2)	P
5.2.2.3	Capacitance limits..... :	No such Capacitance	N/A





IEC 62368-1			
Clause	Requirement + Test	Result - Remark	Verdict
5.2.2.4	Single pulse limits..... :	No such single pulses generated in the EUT or applied to it.	N/A
5.2.2.5	Limits for repetitive pulses..... :	No such repetitive pulses within the EUT	N/A
5.2.2.6	Ringing signals	No such ringing signals within the EUT	N/A
5.2.2.7	Audio signals	No such audio signals	N/A
5.3	Protection against electrical energy sources		P
5.3.1	General Requirements for accessible parts to ordinary, instructed and skilled persons	See only 4.3 and 5.3 to 5.5 which applies to protection between the accessible parts and hazardous parts of other circuits.	P
5.3.1 a)	Accessible ES1/ES2 derived from ES2/ES3 circuits		P
5.3.1 b)	Skilled persons not unintentional contact ES3 bare conductors		N/A
5.3.2.1	Accessibility to electrical energy sources and safeguards	Only ES1 circuit can be accessed to person.	P
	Accessibility to outdoor equipment bare parts		N/A
5.3.2.2	Contact requirements	No opening of enclosure except cord bushing provided, no access with test probe (Figure V.1) to any ES3 circuit or parts.	N/A
	Test with test probe from Annex V		--
5.3.2.2 a)	Air gap – electric strength test potential (V)..... :		N/A
5.3.2.2 b)	Air gap – distance (mm) :		N/A
5.3.2.3	Compliance		N/A
5.3.2.4	Terminals for connecting stripped wire	No stripped wire used.	N/A
5.4	Insulation materials and requirements		P
5.4.1.2	Properties of insulating material	The choice and application have taken into account as specified in this Clause 5 and Annex T and natural rubber, hygroscopic materials or asbestos are not used as insulation.	P
5.4.1.3	Material is non-hygroscopic		P
5.4.1.4	Maximum operating temperature for insulating materials..... :	(See appended table 5.4.1.4)	P
5.4.1.5	Pollution degrees..... :	PD2	P





IEC 62368-1			
Clause	Requirement + Test	Result - Remark	Verdict
☆5.4.1.5.2	Test for pollution degree 1 environment and for an insulating compound	Pollution degree 2 is applied. No insulating compound applied (however see 5.5.4).	N/A
5.4.1.5.3	Thermal cycling test		N/A
5.4.1.6	Insulation in transformers with varying dimensions	No such transformer within the EUT	N/A
5.4.1.7	Insulation in circuits generating starting pulses	No such starting pulses within the EUT	N/A
5.4.1.8	Determination of working voltage..... :	(See appended table 5.4.1.8)	P
5.4.1.9	Insulating surfaces		N/A
5.4.1.10	Thermoplastic parts on which conductive metallic parts are directly mounted	See only 5.4.1.10.3 below.	P
5.4.1.10.2	Vicat test..... :		N/A
5.4.1.10.3	Ball pressure test..... :	Phenolic bobbin material used in T1 which is acceptable without test. For other parts see appended table 5.4.1.10.3	P
5.4.2	Clearances	The highest value in Cl 5.4.2.2 and Cl 5.4.2.3 be used.	P
5.4.2.1	General requirements		P
	Clearances in circuits connected to AC Mains, Alternative method		P
5.4.2.2	Procedure 1 for determining clearance		N/A
	Temporary overvoltage :		—
5.4.2.3	Procedure 2 for determining clearance		P
5.4.2.3.2.2	a.c. mains transient voltage..... :	2500 Vpk considered for Overvoltage Cat. II	—
5.4.2.3.2.3	d.c. mains transient voltage :		—
5.4.2.3.2.4	External circuit transient voltage..... :		—
☆5.4.2.3.2.5	Transient voltage determined by measurement..... :		—
5.4.2.4	Determining the adequacy of a clearance using an electric strength test :	Using procedure 2 to determine the clearance according to 5.4.2.3.	N/A
5.4.2.5	Multiplication factors for clearances and test voltages :	1.0(Up to 2000m)	N/A
5.4.2.6	Clearance measurement..... :		N/A
5.4.3	Creepage distances	(See appended table 5.4.3)	P
5.4.3.1	General		P
☆5.4.3.3	Material group..... :	IIla&IIlb	—





IEC 62368-1			
Clause	Requirement + Test	Result - Remark	Verdict
5.4.3.4	Creepage distances measurement..... :		P
5.4.4	Solid insulation		P
5.4.4.1	General requirements		P
5.4.4.2	Minimum distance through insulation :	(See appended table 5.4.4.2)	P
5.4.4.3	Insulating compound forming solid insulation		N/A
5.4.4.4	Solid insulation in semiconductor devices		P
5.4.4.5	Insulating compound forming cemented joints		N/A
5.4.4.6	Thin sheet material	Insulation tape was used to wrap around the core of transformer T1	P
5.4.4.6.1	General requirements		P
5.4.4.6.2	Separable thin sheet material		P
	Number of layers (pcs) :	2	P
5.4.4.6.3	Non-separable thin sheet material	No such insulation used within the EUT	N/A
	Number of layers (pcs) :		N/A
5.4.4.6.4	Standard test procedure for non-separable thin sheet material..... :		N/A
5.4.4.6.5	Mandrel test		N/A
5.4.4.7	Solid insulation in wound components	See G.5.3 and G.6.1	P
5.4.4.9	Solid insulation at frequencies >30 kHz, E_P , K_R , d , V_{PW} (V)..... :		P
	Alternative by electric strength test, tested voltage (V), K_R :		N/A
5.4.5	Antenna terminal insulation		P
5.4.5.1	General	The power supply will provide non-mains supply voltages to other equipment having antenna terminals.	P
5.4.5.2	Voltage surge test	Surge test with 50 discharges at a maximum rate of 12/min from a 1 nF capacitor charged to 10 kV performed.	P
5.4.5.3	Insulation resistance (M Ω)..... :	Measured 500M Ω between mains supply to output terminals.	P
	Electric strength test..... :	(See appended table 5.4.9)	P
5.4.6	Insulation of internal wire as part of supplementary safeguard	No such insulation of internal wire as part of supplementary safeguard.	N/A





IEC 62368-1			
Clause	Requirement + Test	Result - Remark	Verdict
5.4.7	Tests for semiconductor components and for cemented joints		N/A
5.4.8	Humidity conditioning		P
	Relative humidity (%), temperature (°C), duration (h)..... :	95%, 25°C, 48hrs	—
5.4.9	Electric strength test	(See appended table 5.4.9)	P
5.4.9.1	Test procedure for type test of solid insulation..... :	Compliance was checked immediately following temperature test in 5.4.1.4 and on a sample of the transformer raised to the relevant temperature as measured during that test.	P
5.4.9.2	Test procedure for routine test	No routine tests considered. To be considered during the relevant national approval.	N/A
5.4.10	Safeguards against transient voltages from external circuits		N/A
5.4.10.1	Parts and circuits separated from external circuits		N/A
5.4.10.2	Test methods		N/A
5.4.10.2.1	General		N/A
☆5.4.10.2.2	Impulse test..... :		N/A
5.4.10.2.3	Steady-state test..... :		N/A
5.4.10.3	Verification for insulation breakdown for impulse test..... :		N/A
5.4.11	Separation between external circuits and earth	No such connections for external circuit applied within the EUT	N/A
5.4.11.1	Exceptions to separation between external circuits and earth	No such connections to external circuit as above.	N/A
5.4.11.2	Requirements		N/A
	SPDs bridge separation between external circuit and earth		N/A
	Rated operating voltage U_{op} (V)..... :		—
	Nominal voltage U_{peak} (V)..... :		—
	Max increase due to variation ΔU_{sp} :		—
	Max increase due to ageing ΔU_{sa} :		—
5.4.11.3	Test method and compliance..... :		N/A
5.4.12	Insulating liquid		N/A
5.4.12.1	General requirements		N/A





IEC 62368-1			
Clause	Requirement + Test	Result - Remark	Verdict
5.4.12.2	Electric strength of an insulating liquid..... :		N/A
5.4.12.3	Compatibility of an insulating liquid..... :		N/A
5.4.12.4	Container for insulating liquid..... :		N/A
5.5	Components as safeguards		P
5.5.1	General	Approved X2 and Y1 type capacitor provided. See G.11.1 for compliance and their application.	P
5.5.2	Capacitors and RC units		P
5.5.2.1	General requirement		P
5.5.2.2	Safeguards against capacitor discharge after disconnection of a connector..... :		N/A
5.5.3	Transformers	(See Annex G.5.3)	P
5.5.4	Optocouplers		P
5.5.5	Relays	No such component provided.	N/A
5.5.6	Resistors	No such component provided.	N/A
5.5.7	SPDs	No such component provided.	N/A
5.5.8	Insulation between the mains and an external circuit consisting of a coaxial cable..... :	No such external circuits.	N/A
5.5.9	Safeguards for socket-outlets in outdoor equipment		N/A
	RCD rated residual operating current (mA)..... :		—
5.6	Protective conductor		N/A
5.6.2	Requirement for protective conductors		N/A
5.6	Protective conductor		N/A
5.6.2	Requirement for protective conductors		N/A
5.6.2.1	General requirements		N/A
5.6.2.2	Colour of insulation		N/A
5.6.3	Requirement for protective earthing conductors		N/A
	Protective earthing conductor size (mm ²) :		—
	Protective earthing conductor serving as a reinforced safeguard		N/A
	Protective earthing conductor serving as a double safeguard		N/A
5.6.4	Requirements for protective bonding conductors		N/A
5.6.4.1	Protective bonding conductors		N/A
	Protective bonding conductor size (mm ²)..... :		—
5.6.4.2	Protective current rating (A)..... :		N/A





IEC 62368-1			
Clause	Requirement + Test	Result - Remark	Verdict
5.6.5	Terminals for protective conductors		N/A
5.6.5.1	Terminal size for connecting protective earthing conductors (mm)..... :		N/A
	Terminal size for connecting protective bonding conductors (mm)..... :		N/A
5.6.5.2	Corrosion		N/A
5.6.6	Resistance of the protective bonding system		N/A
5.6.6.1	Requirements		N/A
5.6.6.2	Test Method..... :		N/A
5.6.6.3	Resistance (Ω) or voltage drop..... :		N/A
5.6.7	Reliable connection of a protective earthing conductor		N/A
5.6.8	Functional earthing		N/A
	Conductor size (mm ²)..... :		N/A
	Class II with functional earthing marking :		N/A
	Appliance inlet cl & cr (mm)..... :		N/A
5.7	Prospective touch voltage, touch current and protective conductor current		P
5.7.2	Measuring devices and networks		P
5.7.2.1	Measurement of touch current	Figure 4 of IEC 60990:1999 was used in determining of the limit of ES1.	P
5.7.2.2	Measurement of voltage	(See appended table 5.2)	P
5.7.3	Equipment set-up, supply connections and earth connections	Clause 4, 5.3 and 5.4 of IEC 60990:1999 applied.	P
5.7.4	Unearthed accessible parts..... :		P
5.7.5	Earthed accessible conductive parts..... :		N/A
5.7.6	Requirements when touch current exceeds ES2 limits		N/A
	Protective conductor current (mA)..... :		N/A
	Instructional Safeguard..... :		N/A
5.7.7	Prospective touch voltage and touch current associated with external circuits		N/A
5.7.7.1	Touch current from coaxial cables		N/A
5.7.7.2	Prospective touch voltage and touch current associated with paired conductor cables		N/A
5.7.8	Summation of touch currents from external circuits		N/A
	a) Equipment connected to earthed external circuits, current (mA)..... :		N/A





IEC 62368-1			
Clause	Requirement + Test	Result - Remark	Verdict
	b) Equipment connected to unearthed external circuits, current (mA)..... :		N/A
5.8	Backfeed safeguard in battery backed up supplies		N/A
	Mains terminal ES..... :		N/A
	Air gap (mm)..... :		N/A

6	ELECTRICALLY- CAUSED FIRE		P
6.2	Classification of PS and PIS		P
6.2.2	Power source circuit classifications..... :	PS (power source) classification determined by measuring the maximum power in Figures 34 and 35 for load and power source circuits. (See appended table 6.2.2)	P
6.2.3	Classification of potential ignition sources		P
6.2.3.1	Arcing PIS :	(See appended table 6.2.3.1)	P
6.2.3.2	Resistive PIS :	(See appended table 6.2.3. 2)	P
6.3	Safeguards against fire under normal operating and abnormal operating conditions		P
6.3.1	No ignition and attainable temperature value less than 90 % defined by ISO 871 or less than 300 °C for unknown materials..... :	No ignition and no such temperature attained within the equipment. (See appended table 5.4.1.4, 6.3.2, 9.0, B.2.6)	P
	Combustible materials outside fire enclosure..... :		N/A
6.4	Safeguards against fire under single fault conditions		P
6.4.1	Safeguard method	Method by control of fire spread applied, V-0 fire enclosure provided.	P
6.4.2	Reduction of the likelihood of ignition under single fault conditions in PS1 circuits		P
6.4.3	Reduction of the likelihood of ignition under single fault conditions in PS2 and PS3 circuits		P
6.4.3.1	Supplementary safeguards		P
6.4.3.2	Single Fault Conditions..... :		P
	Special conditions for temperature limited by fuse		N/A
6.4.4	Control of fire spread in PS1 circuits		P





IEC 62368-1			
Clause	Requirement + Test	Result - Remark	Verdict
6.4.5	Control of fire spread in PS2 circuits	Compliance detailed as follows: <ul style="list-style-type: none"> - <u>Printed board</u>: rated min. V-0 - <u>Wire insulation</u>: complying with Clause 6 (See Table 4.1.2 for tubing used). standard, which test method and testing condition equal to IEC/EN 60695-11-21. - <u>All other components</u>: at least V-2 except for parts mounted on min. V-0 material or small parts of combustible material (with mass less than 4g) or components complying to relevant IEC standard. - <u>Isolating transformer</u>: complying with G.5.3. 	P
6.4.5.2	Supplementary safeguards		N/A
6.4.6	Control of fire spread in PS3 circuits		P
6.4.7	Separation of combustible materials from a PIS	No such combustible material other than at least V-2 material used.	P
6.4.7.2	Separation by distance		N/A
6.4.7.3	Separation by a fire barrier		N/A
6.4.8	Fire enclosures and fire barriers		P
6.4.8.2	Fire enclosure and fire barrier material properties	The V-0 material is used for the fire enclosure (overall enclosure).	P
6.4.8.2.1	Requirements for a fire barrier	No fire barrier used.	N/A
6.4.8.2.2	Requirements for a fire enclosure		P
6.4.8.3	Constructional requirements for a fire enclosure and a fire barrier	No openings in fire enclosure.	P
6.4.8.3.1	Fire enclosure and fire barrier openings	No openings	P
6.4.8.3.2	Fire barrier dimensions	No fire barrier	N/A
6.4.8.3.3	Top openings and properties		N/A
	Openings dimensions (mm)..... :		N/A
6.4.8.3.4	Bottom openings and properties		N/A
	Openings dimensions (mm)..... :		N/A
	Flammability tests for the bottom of a fire enclosure		N/A





IEC 62368-1			
Clause	Requirement + Test	Result - Remark	Verdict
	Instructional Safeguard..... :		N/A
6.4.8.3.5	Side openings and properties		N/A
	Openings dimensions (mm)..... :		N/A
6.4.8.3.6	Integrity of a fire enclosure, condition met: a), b) or c)..... :		N/A
6.4.8.4	Separation of a PIS from a fire enclosure and a fire barrier distance (mm) or flammability rating..... :	The V-0 material is used for the fire enclosure (overall enclosure).	P
6.4.9	Flammability of insulating liquid..... :		N/A
6.5	Internal and external wiring		N/A
6.5.1	General requirements		N/A
6.5.2	Requirements for interconnection to building wiring :		N/A
6.5.3	Internal wiring size (mm ²) for socket-outlets..... :		N/A
6.6	Safeguards against fire due to the connection to additional equipment		P

7	INJURY CAUSED BY HAZARDOUS SUBSTANCES		N/A
7.2	Reduction of exposure to hazardous substances		N/A
7.3	Ozone exposure		N/A
7.4	Use of personal safeguards or personal protective equipment (PPE)		N/A
	Personal safeguards and instructions..... :		—
7.5	Use of instructional safeguards and instructions		N/A
	Instructional safeguard (ISO 7010)..... :		—
7.6	Batteries and their protection circuits		N/A

8	MECHANICALLY-CAUSED INJURY		P
8.2	Mechanical energy source classifications		P
8.3	Safeguards against mechanical energy sources		N/A
8.4	Safeguards against parts with sharp edges and corners		P
8.4.1	Safeguards		N/A
	Instructional Safeguard..... :		N/A
8.4.2	Sharp edges or corners	Edges and comers of the enclosure are rounded.	P
8.5	Safeguards against moving parts		N/A
8.5.1	Fingers, jewellery, clothing, hair, etc., contact with MS2 or MS3 parts		N/A





IEC 62368-1			
Clause	Requirement + Test	Result - Remark	Verdict
	MS2 or MS3 part required to be accessible for the function of the equipment		N/A
	Moving MS3 parts only accessible to skilled person		N/A
8.5.2	Instructional safeguard..... :		N/A
8.5.4	Special categories of equipment containing moving parts		N/A
☆8.5.4.1	General		N/A
8.5.4.2	Equipment containing work cells with MS3 parts		N/A
8.5.4.2.1	Protection of persons in the work cell		N/A
8.5.4.2.2	Access protection override		N/A
8.5.4.2.2.1	Override system		N/A
8.5.4.2.2.2	Visual indicator		N/A
8.5.4.2.3	Emergency stop system		N/A
	Maximum stopping distance from the point of activation (m)..... :		N/A
	Space between end point and nearest fixed mechanical part (mm)..... :		N/A
8.5.4.2.4	Endurance requirements		N/A
	Mechanical system subjected to 100 000 cycles of operation		N/A
	- Mechanical function check and visual inspection		N/A
	- Cable assembly..... :		N/A
8.5.4.3	Equipment having electromechanical device for destruction of media		N/A
8.5.4.3.1	Equipment safeguards		N/A
8.5.4.3.2	Instructional safeguards against moving parts..... :		N/A
8.5.4.3.3	Disconnection from the supply		N/A
8.5.4.3.4	Cut type and test force (N)..... :		N/A
8.5.4.3.5	Compliance		N/A
☆8.5.5	High pressure lamps		N/A
	Explosion test..... :		N/A
8.5.5.3	Glass particles dimensions (mm)..... :		N/A
8.6	Stability of equipment		N/A
8.6.1	General		N/A
	Instructional safeguard..... :		N/A
8.6.2	Static stability		N/A





IEC 62368-1			
Clause	Requirement + Test	Result - Remark	Verdict
8.6.2.2	Static stability test..... :		N/A
8.6.2.3	Downward force test		N/A
8.6.3	Relocation stability		N/A
	Wheels diameter (mm)..... :		—
	Tilt test		N/A
8.6.4	Glass slide test		N/A
8.6.5	Horizontal force test..... :		N/A
8.7	Equipment mounted to wall, ceiling or other structure		N/A
8.7.1	Mount means type..... :		N/A
8.7.2	Test methods		N/A
	Test 1, additional downwards force (N)..... :		N/A
	Test 2, number of attachment points and test force (N)..... :		N/A
	Test 3 Nominal diameter (mm) and applied torque (Nm)..... :		N/A
8.8	Handles strength		N/A
8.8.1	General		N/A
8.8.2	Handle strength test		N/A
	Number of handles..... :		—
	Force applied (N)..... :		—
8.9	Wheels or casters attachment requirements		N/A
8.9.2	Pull test		N/A
8.10	Carts, stands and similar carriers		N/A
8.10.1	General		N/A
8.10.2	Marking and instructions..... :		N/A
8.10.3	Cart, stand or carrier loading test		N/A
	Loading force applied (N)..... :		N/A
8.10.4	Cart, stand or carrier impact test		N/A
8.10.5	Mechanical stability		N/A
	Force applied (N)..... :		—
8.10.6	Thermoplastic temperature stability		N/A
8.11	Mounting means for slide-rail mounted equipment (SRME)		N/A
8.11.1	General		N/A
8.11.2	Requirements for slide rails		N/A
	Instructional Safeguard..... :		N/A





IEC 62368-1			
Clause	Requirement + Test	Result - Remark	Verdict
8.11.3	Mechanical strength test		N/A
8.11.3.1	Downward force test, force (N) applied..... :		N/A
8.11.3.2	Lateral push force test		N/A
8.11.3.3	Integrity of slide rail end stops		N/A
8.11.4	Compliance		N/A
8.12	Telescoping or rod antennas		N/A
	Button/ball diameter (mm)..... :		—

9	THERMAL BURN INJURY		P
9.2	Thermal energy source classifications		P
9.3	Touch temperature limits		P
9.3.1	Touch temperatures of accessible parts..... :	(See appended table 5.4.1.4, 9.3, B.1.5, B.2.6)	P
9.3.2	Test method and compliance		P
9.4	Safeguards against thermal energy sources		P
9.5	Requirements for safeguards		P
9.5.1	Equipment safeguard	Enclosure provided to limit the transfer of thermal energy of internal parts under normal operating conditions and abnormal operating conditions.	P
9.5.2	Instructional safeguard..... :	Instructional safeguard is not required.	N/A
9.6	Requirements for wireless power transmitters		N/A
9.6.1	General		N/A
9.6.2	Specification of the foreign objects		N/A
9.6.3	Test method and compliance..... :		N/A

10	RADIATION		N/A
10.2	Radiation energy source classification		N/A
10.2.1	General classification		N/A
	Lasers..... :		—
	Lamps and lamp systems..... :		—
	Image projectors..... :		—
	X-Ray..... :		—
	Personal music player..... :		—
10.3	Safeguards against laser radiation		N/A





IEC 62368-1			
Clause	Requirement + Test	Result - Remark	Verdict
	The standard(s) equipment containing laser(s) comply..... :		N/A
10.4	Safeguards against optical radiation from lamps and lamp systems (including LED types)		N/A
10.4.1	General requirements		N/A
	Instructional safeguard provided for accessible radiation level needs to exceed		N/A
	Risk group marking and location..... :		N/A
	Information for safe operation and installation		N/A
10.4.2	Requirements for enclosures		N/A
	UV radiation exposure..... :		N/A
10.4.3	Instructional safeguard..... :		N/A
10.5	Safeguards against X-radiation		N/A
10.5.1	Requirements		N/A
	Instructional safeguard for skilled persons..... :		—
10.5.3	Maximum radiation (pA/kg)..... :		—
10.6	Safeguards against acoustic energy sources		N/A
10.6.1	General		N/A
10.6.2	Classification		N/A
	Acoustic output $L_{Aeq,T}$, dB(A)..... :		N/A
	Unweighted RMS output voltage (mV)..... :		N/A
	Digital output signal (dBFS)..... :		N/A
10.6.3	Requirements for dose-based systems		N/A
10.6.3.1	General requirements		N/A
10.6.3.2	Dose-based warning and automatic decrease		N/A
10.6.3.3	Exposure-based warning and requirements		N/A
	30 s integrated exposure level (MEL30)..... :		N/A
	Warning for MEL \geq 100 dB(A)..... :		N/A
10.6.4	Measurement methods		N/A
10.6.5	Protection of persons		N/A
	Instructional safeguards..... :		N/A
10.6.6	Requirements for listening devices (headphones, earphones, etc.)		N/A
10.6.6.1	Corded listening devices with analogue input		N/A
	Listening device input voltage (mV)..... :		N/A
10.6.6.2	Corded listening devices with digital input		N/A





IEC 62368-1			
Clause	Requirement + Test	Result - Remark	Verdict
	Max. acoustic output $L_{Aeq,T}$, dB(A)..... :		N/A
10.6.6.3	Cordless listening devices		N/A
	Max. acoustic output $L_{Aeq,T}$, dB(A)..... :		N/A

B	NORMAL OPERATING CONDITION TESTS, ABNORMAL OPERATING CONDITION TESTS AND SINGLE FAULT CONDITION TESTS		P
B.1	General		P
B.1.5	Temperature measurement conditions		P
B.2	Normal operating conditions		P
B.2.1	General requirements..... :	(See summary of testing for tested models, each loaded according to its output ratings. See also appended table B.2.5.)	P
	Audio Amplifiers and equipment with audio amplifiers..... :	Not such equipment.	N/A
B.2.3	Supply voltage and tolerances	+10 % and -10 % considered.	P
B.2.5	Input test..... :	(See appended table B.2.5)	P
B.3	Simulated abnormal operating conditions		P
B.3.1	General	(See appended table B.3)	P
B.3.2	Covering of ventilation openings		N/A
	Instructional safeguard..... :		N/A
B.3.3	DC mains polarity test		N/A
B.3.4	Setting of voltage selector	No voltage selector was used.	N/A
B.3.5	Maximum load at output terminals	(See appended table B.3)	P
B.3.6	Reverse battery polarity	No battery within the EUT	N/A
B.3.7	Audio amplifier abnormal operating conditions		N/A
B.3.8	Safeguards functional during and after abnormal operating conditions..... :	All safeguards remained effective.	P
B.4	Simulated single fault conditions		P
B.4.1	General		P
B.4.2	Temperature controlling device		N/A
B.4.3	Blocked motor test	No motors used.	N/A
B.4.4	Functional insulation	See below.	P
B.4.4.1	Short circuit of clearances for functional insulation	(See appended table B.4)	P
B.4.4.2	Short circuit of creepage distances for functional insulation	(See appended table B.4)	P





IEC 62368-1			
Clause	Requirement + Test	Result - Remark	Verdict
B.4.4.3	Short circuit of functional insulation on coated printed boards	No coated printed boards used.	N/A
B.4.5	Short-circuit and interruption of electrodes in tubes and semiconductors	(See appended table B.4 for faults on electronic components)	P
B.4.6	Short circuit or disconnection of passive components	(See appended table B.4)	P
B.4.7	Continuous operation of components	The EUT is continuous operating type and no such components intended for short time operation or intermittent operation	N/A
B.4.8	Compliance during and after single fault conditions	No change to circuits classified in 5.3.	P
B.4.9	Battery charging and discharging under single fault conditions	No battery involved in the EUT	N/A
C	UV RADIATION		N/A
C.1	Protection of materials in equipment from UV radiation		N/A
C.1.2	Requirements	No UV generated from the equipment.	N/A
C.1.3	Test method		N/A
C.2	UV light conditioning test		N/A
C.2.1	Test apparatus		N/A
C.2.2	Mounting of test samples		N/A
C.2.3	Carbon-arc light-exposure test		N/A
C.2.4	Xenon-arc light-exposure test		N/A
D	TEST GENERATORS		N/A
D.1	Impulse test generators		N/A
D.2	Antenna interface test generator		N/A
D.3	Electronic pulse generator		N/A
E	TEST CONDITIONS FOR EQUIPMENT CONTAINING AUDIO AMPLIFIERS		N/A
E.1	Electrical energy source classification for audio signals		N/A
	Maximum non-clipped output power (W)	Not such equipment.	—
	Rated load impedance (Ω)		—
	Open-circuit output voltage (V)		—
	Instructional safeguard		—
E.2	Audio amplifier normal operating conditions		N/A
	Audio signal source type		—
	Audio output power (W)		—





IEC 62368-1			
Clause	Requirement + Test	Result - Remark	Verdict
	Audio output voltage (V)..... :		—
	Rated load impedance (Ω) :		—
	Requirements for temperature measurement		N/A
E.3	Audio amplifier abnormal operating conditions		N/A
F	EQUIPMENT MARKINGS, INSTRUCTIONS, AND INSTRUCTIONAL SAFEGUARDS		P
F.1	General		P
	Language :	English version provided and checked.	—
F.2	Letter symbols and graphical symbols		P
F.2.1	Letter symbols according to IEC60027-1	Letter symbols for quantities and units are complied with IEC 60027-1.	N/A
F.2.2	Graphic symbols according to IEC, ISO or manufacturer specific	Graphical symbols are complied with IEC 60417, ISO 3864-2, ISO 7000 or ISO 7010.	P
F.3	Equipment markings		P
F.3.1	Equipment marking locations	The required marking is located on the product is easily visible.	P
F.3.2	Equipment identification markings	See copy of marking plate.	P
F.3.2.1	Manufacturer identification :	See copy of marking plate.	P
F.3.2.2	Model identification :	See page 2 for details	P
F.3.3	Equipment rating markings	See the following details.	P
F.3.3.1	Equipment with direct connection to mains		N/A
F.3.3.2	Equipment without direct connection to mains		P
F.3.3.3	Nature of the supply voltage..... :	See copy of marking plate.	—
F.3.3.4	Rated voltage..... :	See copy of marking plate.	—
F.3.3.5	Rated frequency..... :	See copy of marking plate.	—
F.3.3.6	Rated current or rated power..... :	See copy of marking plate.	—
F.3.3.7	Equipment with multiple supply connections	Only one mains supply connection provided.	N/A
F.3.4	Voltage setting device	No voltage setting device.	N/A
F.3.5	Terminals and operating devices	See below.	P
F.3.5.1	Mains appliance outlet and socket-outlet markings :	No such devices on the equipment	N/A
F.3.5.2	Switch position identification marking..... :	No switch used.	N/A





IEC 62368-1			
Clause	Requirement + Test	Result - Remark	Verdict
F.3.5.3	Replacement fuse identification and rating markings..... :	The fuse is located within the equipment and not replaceable by an ordinary person or an instructed person or a skilled person. The fuse marked with F1: T3.15AL 250V	P
	Instructional safeguards for neutral fuse..... :	No such battery on the equipment.	N/A
F.3.5.4	Replacement battery identification marking..... :		N/A
F.3.5.5	Neutral conductor terminal	See below.	N/A
F.3.5.6	Terminal marking location		N/A
F.3.6	Equipment markings related to equipment classification		P
F.3.6.1	Class I equipment		N/A
F.3.6.1.1	Protective earthing conductor terminal..... :		N/A
F.3.6.1.2	Protective bonding conductor terminals :		N/A
F.3.6.2	Equipment class marking..... :	Class II equipment	P
F.3.6.3	Functional earthing terminal marking..... :		N/A
F.3.7	Equipment IP rating marking..... :	IPX0.	—
F.3.8	External power supply output marking..... :		N/A
F.3.9	Durability, legibility and permanence of marking	Marking is considered to be legible and easily discernible. See also the following details.	P
F.3.10	Test for permanence of markings	The label was subjected to the permanence of marking test. The label was rubbed with cloth soaked with water for 15 sec. And then again for 15 sec, with the cloth soaked with petroleum spirit. After this test there was no damage to the label. The marking on the label did not fade. There was no curling and lifting of the label edge. After each test, the marking remained legible.	P
F.4	Instructions		P
	a)..... In formation prior to installation and initial use		P
	b)..... E quipment for use in locations where children not likely to be present		N/A





IEC 62368-1			
Clause	Requirement + Test	Result - Remark	Verdict
	c)..... Instructions for installation and interconnection		P
	d)..... Equipment intended for use only in restricted access area		N/A
	e)..... Equipment intended to be fastened in place		N/A
	f)..... Instructions for audio equipment terminals		N/A
	g)..... Protective earthing used as a safeguard		N/A
	h)..... Protective conductor current exceeding ES2 limits		N/A
	i)..... Graphic symbols used on equipment		P
	j)..... Permanently connected equipment not provided with all-pole mains switch		N/A
	k)..... Replaceable components or modules providing safeguard function		N/A
	l)..... Equipment containing insulating liquid		N/A
	m)..... Installation instructions for outdoor equipment		N/A
F.5	Instructional safeguards		P
G	COMPONENTS		P
☆ G.1	Switches		N/A
G.1.1	General	No switch used.	N/A
G.1.2	Ratings, endurance, spacing, maximum load		N/A
G.1.3	Test method and compliance		N/A
☆ G.2	Relays		N/A
G.2.1	Requirements	No relay used.	N/A
G.2.2	Overload test		N/A
G.2.3	Relay controlling connectors supplying power to other equipment		N/A
G.2.4	Test method and compliance		N/A
☆ G.3	Protective devices		P
G.3.1	Thermal cut-offs	No thermal cut-offs provided within the equipment.	N/A





IEC 62368-1			
Clause	Requirement + Test	Result - Remark	Verdict
	Thermal cut-outs separately approved according to IEC 60730 with conditions indicated in a) & b)		N/A
	Thermal cut-outs tested as part of the equipment as indicated in c)		N/A
G.3.1.2	Test method and compliance		N/A
G.3.2	Thermal links		N/A
G.3.2.1	a) Thermal links tested separately according to IEC 60691 with specifics		N/A
	b) Thermal links tested as part of the equipment		N/A
G.3.2.2	Test method and compliance		N/A
G.3.3	PTC thermistors	No PTC thermistor used.	N/A
G.3.4	Overcurrent protection devices	Current fuse F1 complying with IEC 60127 as overcurrent protection device and protected within 1s.	P
G.3.5	Safeguards components not mentioned in G.3.1 to G.3.4		N/A
G.3.5.1	Non-resettable devices suitably rated and marking provided		N/A
G.3.5.2	Single faults conditions..... :		N/A
G.4	Connectors		P
G.4.1	Spacings	No such connector with insulated surfaces accessible within the EUT	N/A
☆G.4.2	Mains connector configuration..... :	Mains plug complied with standard, see attachment 2 for details.	N/A
G.4.3	Plug is shaped that insertion into mains socket-outlets or appliance coupler is unlikely	Output connector with a shape that insert into a mains connector is unlikely to occur.	N/A
G.5	Wound components		P
G.5.1	Wire insulation in wound components	Approved TIW used for secondary winding of T1	P
G.5.1.2	Protection against mechanical stress	The tube is provided for primary and secondary winding of transformer to protect against mechanical stress.	P
☆G.5.2	Endurance test	Not applied for.	N/A
G.5.2.1	General test requirements		N/A
G.5.2.2	Heat run test		N/A
	Test time (days per cycle)..... :		—





IEC 62368-1			
Clause	Requirement + Test	Result - Remark	Verdict
	Test temperature (°C)..... :		—
G.5.2.3	Wound components supplied from the mains		N/A
G.5.2.4	No insulation breakdown		N/A
G.5.3	Transformers		P
G.5.3.1	Compliance method..... :		P
	Position..... :	T1	P
	Method of protection..... :	By protection circuit design.	P
G.5.3.2	Insulation	Primary windings and secondary windings are separated by Reinforced insulation (The core is considered as primary part as it is not isolated from Primary)	P
	Protection from displacement of windings..... :	The end-turn of each winding is fixed by insulating tape	—
G.5.3.3	Transformer overload tests	(See appended table B.3)	P
G.5.3.3.1	Test conditions	(See appended table B.3)	P
G.5.3.3.2	Winding temperatures		P
G.5.3.3.3	Winding temperatures - alternative test method	Alternative test method was not considered.	N/A
G.5.3.4	Transformers using FIW		N/A
G.5.3.4.1	General		N/A
	FIW wire nominal diameter..... :		—
G.5.3.4.2	Transformers with basic insulation only		N/A
G.5.3.4.3	Transformers with double insulation or reinforced insulation..... :		N/A
G.5.3.4.4	Transformers with FIW wound on metal or ferrite core		N/A
G.5.3.4.5	Thermal cycling test and compliance		N/A
G.5.3.4.6	Partial discharge test		N/A
G.5.3.4.7	Routine test		N/A
G.5.4	Motors		N/A
G.5.4.1	General requirements	No motor used.	N/A
G.5.4.2	Motor overload test conditions		N/A
G.5.4.3	Running overload test		N/A
G.5.4.4.2	Locked-rotor overload test		N/A
	Test duration (days) :		—





IEC 62368-1			
Clause	Requirement + Test	Result - Remark	Verdict
G.5.4.5	Running overload test for DC motors		N/A
G.5.4.5.2	Tested in the unit		N/A
G.5.4.5.3	Alternative method		N/A
G.5.4.6	Locked-rotor overload test for DC motors		N/A
G.5.4.6.2	Tested in the unit		N/A
	Maximum Temperature :		N/A
G.5.4.6.3	Alternative method		N/A
G.5.4.7	Motors with capacitors		N/A
G.5.4.8	Three-phase motors		N/A
G.5.4.9	Series motors		N/A
	Operating voltage :		—
G.6	Wire Insulation		P
G.6.1	General	Triple insulated winding in T1 secondary windings used as reinforced safeguard in the isolating transformer that has separately complied with Annex J. See Appended table 4.1.2. No other wires used other than Basic insulation not under stress in the EUT.	P
G.6.2	Enamelled winding wire insulation	Insulation does not rely on solvent-based enamel.	N/A
G.7	Mains supply cords		N/A
☆G.7.1	General requirements		N/A
	Type..... :		—
G.7.2	Cross sectional area (mm ² or AWG)..... :		N/A
G.7.3	Cord anchorages and strain relief for non-detachable power supply cords		N/A
G.7.3.2	Cord strain relief		N/A
G.7.3.2.1	Requirements		N/A
	Strain relief test force (N)..... :		N/A
G.7.3.2.2	Strain relief mechanism failure		N/A
G.7.3.2.3	Cord sheath or jacket position, distance (mm)..... :		N/A
G.7.3.2.4	Strain relief and cord anchorage material		N/A
G.7.4	Cord Entry		N/A
G.7.5	Non-detachable cord bend protection		N/A
G.7.5.1	Requirements		N/A





IEC 62368-1			
Clause	Requirement + Test	Result - Remark	Verdict
G.7.5.2	Test method and compliance		N/A
	Overall diameter or minor overall dimension, D (mm)..... :		—
	Radius of curvature after test (mm)..... :		—
G.7.6	Supply wiring space		N/A
G.7.6.1	General requirements		N/A
G.7.6.2	Stranded wire		N/A
G.7.6.2.1	Requirements		N/A
G.7.6.2.2	Test with 8 mm strand		N/A
☆G.8	Varistors		N/A
G.8.1	General requirements		N/A
G.8.2	Safeguards against fire		N/A
G.8.2.1	General		N/A
G.8.2.2	Varistor overload test		N/A
G.8.2.3	Temporary overvoltage test		N/A
☆G.9	Integrated circuit (IC) current limiters		N/A
G.9.1	Requirements	No IC current limiter provided within the equipment.	N/A
	IC limiter output current (max. 5A)..... :		—
	Manufacturers' defined drift :		—
G.9.2	Test Program		N/A
G.9.3	Compliance		N/A
☆G.10	Resistors		N/A
G.10.1	General	Resistor bridging functional insulation	N/A
G.10.2	Conditioning		N/A
G.10.3	Resistor test		N/A
G.10.4	Voltage surge test		N/A
G.10.5	Impulse test		N/A
G.10.6	Overload test		N/A
G.11	Capacitors and RC units		P
G.11.1	General requirements	Y1 Capacitors used in accordance with their rating and complied with subclasses of IEC 60384-14. (see appended table 4.1.2)	P





IEC 62368-1			
Clause	Requirement + Test	Result - Remark	Verdict
G.11.2	Conditioning of capacitors and RC units	Y1 capacitors complied as environmental category at least 25/125/21 (21 days humidity) and in any case at 40°C	P
G.11.3	Rules for selecting capacitors	The selection followed with table G.9. Y1 capacitor bridging Reinforced insulation have rated voltage at least 250V tested with impulse 8kV peak and 4kV rms.	P
☆G.12	Optocouplers		P
	Optocouplers comply with IEC 60747-5-5 with specifics		P
	Type test voltage $V_{ini,a}$:		—
	Routine test voltage, $V_{ini,b}$:		—
G.13	Printed boards		P
G.13.1	General requirements	See the following details.	P
G.13.2	Uncoated printed boards	The insulation between conductors on the outer surfaces of an uncoated printed board complied with the minimum clearance and creepage requirements	P
☆G.13.3	Coated printed boards	No coated printed board or multilayer board applied for within the equipment.	N/A
G.13.4	Insulation between conductors on the same inner surface		N/A
G.13.5	Insulation between conductors on different surfaces		N/A
	Distance through insulation..... :		N/A
	Number of insulation layers (pcs) :		—
☆G.13.6	Tests on coated printed boards		N/A
G.13.6.1	Sample preparation and preliminary inspection		N/A
G.13.6.2	Test method and compliance		N/A
☆G.14	Coating on components terminals		N/A
G.14.1	Requirements :	No coating on component terminals considered to affect creepage or clearances.	N/A
☆G.15	Pressurized liquid filled components		N/A
G.15.1	Requirements	No such device provided within the equipment.	N/A





IEC 62368-1			
Clause	Requirement + Test	Result - Remark	Verdict
G.15.2	Test methods and compliance		N/A
G.15.2.1	Hydrostatic pressure test		N/A
G.15.2.2	Creep resistance test		N/A
G.15.2.3	Tubing and fittings compatibility test		N/A
G.15.2.4	Vibration test		N/A
G.15.2.5	Thermal cycling test		N/A
G.15.2.6	Force test		N/A
G.15.3	Compliance		N/A
☆G.16	IC including capacitor discharge function (ICX)		N/A
G.16.1	Condition for fault tested is not required		N/A
	ICX with associated circuitry tested in equipment		N/A
	ICX tested separately		N/A
G.16.2	Tests		N/A
	Smallest capacitance and smallest resistance specified by ICX manufacturer for impulse test..... :		—
	Mains voltage that impulses to be superimposed on :		—
	Largest capacitance and smallest resistance for ICX tested by itself for 10000 cycles test..... :		—
G.16.3	Capacitor discharge test..... :		N/A
H	CRITERIA FOR TELEPHONE RINGING SIGNALS		N/A
H.1	General		N/A
H.2	Method A		N/A
H.3	Method B		N/A
H.3.1	Ringling signal		N/A
H.3.1.1	Frequency (Hz) :		—
H.3.1.2	Voltage (V) :		—
H.3.1.3	Cadence; time (s) and voltage (V) :		—
H.3.1.4	Single fault current (mA):..... :		—
H.3.2	Tripping device and monitoring voltage		N/A
H.3.2.1	Conditions for use of a tripping device or a monitoring voltage		N/A
H.3.2.2	Tripping device		N/A
H.3.2.3	Monitoring voltage (V)..... :		N/A





IEC 62368-1			
Clause	Requirement + Test	Result - Remark	Verdict
J	INSULATED WINDING WIRES FOR USE WITHOUT INTERLEAVED INSULATION		P
J.1	General		P
	Winding wire insulation..... :		—
	Solid round winding wire, diameter (mm)..... :		N/A
	Solid square and rectangular (flatwise bending) winding wire, cross-sectional area (mm ²)..... :		N/A
J.2/J.3	Tests and Manufacturing		—
K	SAFETY INTERLOCKS		N/A
K.1	General requirements		N/A
	Instructional safeguard..... :		N/A
K.2	Components of safety interlock safeguard mechanism		N/A
K.3	Inadvertent change of operating mode		N/A
K.4	Interlock safeguard override		N/A
K.5	Fail-safe		N/A
K.5.1	Under single fault condition		N/A
K.6	Mechanically operated safety interlocks		N/A
K.6.1	Endurance requirement		N/A
K.6.2	Test method and compliance..... :		N/A
K.7	Interlock circuit isolation		N/A
K.7.1	Separation distance for contact gaps & interlock circuit elements		N/A
	In circuit connected to mains, separation distance for contact gaps (mm)..... :		N/A
	In circuit isolated from mains, separation distance for contact gaps (mm)..... :		N/A
	Electric strength test before and after the test of K.7.2..... :		N/A
☆K.7.2	Overload test, Current (A)..... :		N/A
☆K.7.3	Endurance test		N/A
K.7.4	Electric strength test		N/A
L	DISCONNECT DEVICES		P
L.1	General requirements	AC plug used to disconnect from AC mains.	P
L.2	Permanently connected equipment	Not permanently connected equipment.	N/A





IEC 62368-1			
Clause	Requirement + Test	Result - Remark	Verdict
L.3	Parts that remain energized	When AC plug disconnected no hazardous voltage in the equipment.	P
L.4	Single-phase equipment	The mains plug disconnects both poles simultaneously.	P
L.5	Three-phase equipment		N/A
L.6	Switches as disconnect devices		N/A
L.7	Plugs as disconnect devices		N/A
L.8	Multiple power sources	Only one a.c. mains connection.	N/A
	Instructional safeguard..... :		N/A
M	EQUIPMENT CONTAINING BATTERIES AND THEIR PROTECTION CIRCUITS		N/A
M.1	General requirements		N/A
M.2	Safety of batteries and their cells		N/A
M.2.1	Batteries and their cells comply with relevant IEC standards..... :		N/A
M.3	Protection circuits for batteries provided within the equipment		N/A
M.3.1	Requirements		N/A
M.3.2	Test method		N/A
	Overcharging of a rechargeable battery		N/A
	Excessive discharging		N/A
	Unintentional charging of a non-rechargeable battery		N/A
	Reverse charging of a rechargeable battery		N/A
M.3.3	Compliance		N/A
M.4	Additional safeguards for equipment containing a portable secondary lithium battery		N/A
M.4.1	General		N/A
M.4.2	Charging safeguards		N/A
M.4.2.1	Requirements		N/A
M.4.2.2	Compliance..... :		N/A
M.4.3	Fire enclosure..... :		N/A
M.4.4	Drop test of equipment containing a secondary lithium battery		N/A
M.4.4.2	Preparation and procedure for the drop test		N/A
M.4.4.3	Drop, Voltage on reference and dropped batteries (V); voltage difference during 24 h period (%):		N/A
M.4.4.4	Check of the charge/discharge function		N/A





IEC 62368-1			
Clause	Requirement + Test	Result - Remark	Verdict
M.4.4.5	Charge / discharge cycle test		N/A
M.4.4.6	Compliance		N/A
M.5	Risk of burn due to short-circuit during carrying		N/A
M.5.1	Requirement		N/A
M.5.2	Test method and compliance		N/A
M.6	Safeguards against short-circuits		N/A
M.6.1	External and internal faults		N/A
M.6.2	Compliance		N/A
☆ M.7	Risk of explosion from lead acid and NiCd batteries		N/A
M.7.1	Ventilation preventing explosive gas concentration		N/A
	Calculated hydrogen generation rate..... :		N/A
M.7.2	Test method and compliance		N/A
	Minimum air flow rate, Q (m ³ /h)..... :		N/A
M.7.3	Ventilation tests		N/A
M.7.3.1	General		N/A
M.7.3.2	Ventilation test – alternative 1		N/A
	Hydrogen gas concentration (%)..... :		N/A
M.7.3.3	Ventilation test – alternative 2		N/A
	Obtained hydrogen generation rate..... :		N/A
M.7.3.4	Ventilation test – alternative 3		N/A
	Hydrogen gas concentration (%)..... :		N/A
M.7.4	Marking..... :		N/A
☆ M.8	Protection against internal ignition from external spark sources of batteries with aqueous electrolyte		N/A
M.8.1	General		N/A
M.8.2	Test method		N/A
M.8.2.1	General		N/A
M.8.2.2	Estimation of hypothetical volume V _z (m ³ /s)..... :		—
M.8.2.3	Correction factors..... :		—
M.8.2.4	Calculation of distance d (mm) :		—
M.9	Preventing electrolyte spillage		N/A
M.9.1	Protection from electrolyte spillage		N/A
M.9.2	Tray for preventing electrolyte spillage		N/A
M.10	Instructions to prevent reasonably foreseeable misuse		N/A





IEC 62368-1			
Clause	Requirement + Test	Result - Remark	Verdict
	Instructional safeguard..... :		N/A
N	ELECTROCHEMICAL POTENTIALS		N/A
	Material(s) used..... :		—
O	MEASUREMENT OF CREEPAGE DISTANCES AND CLEARANCES		P
	Value of X (mm)..... :		—
P	SAFEGUARDS AGAINST CONDUCTIVE OBJECTS		P
P.1	General	No opening	P
P.2	Safeguards against entry or consequences of entry of a foreign object		P
P.2.1	General		P
P.2.2	Safeguards against entry of a foreign object		P
	Location and Dimensions (mm) :	No openings of enclosure.	—
P.2.3	Safeguards against the consequences of entry of a foreign object		N/A
P.2.3.1	Safeguard requirements		N/A
	The ES3 and PS3 keep-out volume in Figure P.3 not applicable to transportable equipment		N/A
	Transportable equipment with metalized plastic parts..... :		N/A
P.2.3.2	Consequence of entry test..... :		N/A
P.3	Safeguards against spillage of internal liquids		N/A
P.3.1	General		N/A
P.3.2	Determination of spillage consequences		N/A
P.3.3	Spillage safeguards		N/A
P.3.4	Compliance		N/A
☆ P.4	Metallized coatings and adhesives securing parts		N/A
P.4.1	General		N/A
P.4.2	Tests		N/A
	Conditioning, T _c (°C)..... :		—
	Duration (weeks)..... :		—
Q	CIRCUITS INTENDED FOR INTERCONNECTION WITH BUILDING WIRING		N/A
Q.1	Limited power sources		N/A
Q.1.1	Requirements		N/A
	a) Inherently limited output		N/A
	b) Impedance limited output		N/A
	c) Regulating network limited output		N/A
	d) Overcurrent protective device limited output		N/A





IEC 62368-1			
Clause	Requirement + Test	Result - Remark	Verdict
	e) IC current limiter complying with G.9		N/A
Q.1.2	Test method and compliance.....:		N/A
	Current rating of overcurrent protective device (A).....:		N/A
Q.2	Test for external circuits – paired conductor cable	No such circuit for connection to the EUT	N/A
	Maximum output current (A)		N/A
	Current limiting method.....:		—
R	LIMITED SHORT CIRCUIT TEST		N/A
R.1	General		N/A
R.2	Test setup		N/A
	Overcurrent protective device for test.....:		—
R.3	Test method		N/A
	Cord/cable used for test.....:		—
R.4	Compliance		N/A
S	TESTS FOR RESISTANCE TO HEAT AND FIRE		N/A
S.1	Flammability test for fire enclosures and fire barrier materials of equipment where the steady state power does not exceed 4 000 W		N/A
	Samples, material.....:		—
	Wall thickness (mm).....:		—
	Conditioning (°C).....:		—
	Test flame according to IEC 60695-11-5 with conditions as set out		N/A
	- Material not consumed completely		N/A
	- Material extinguishes within 30s		N/A
	- No burning of layer or wrapping tissue		N/A
S.2	Flammability test for fire enclosure and fire barrier integrity		N/A
	Samples, material.....:		—
	Wall thickness (mm).....:		—
	Conditioning (°C).....:		—
S.3	Flammability test for the bottom of a fire enclosure		N/A
S.3.1	Mounting of samples		N/A
S.3.2	Test method and compliance		N/A
	Mounting of samples		—
	Wall thickness (mm).....:		—
S.4	Flammability classification of materials		N/A





IEC 62368-1			
Clause	Requirement + Test	Result - Remark	Verdict
S.5	Flammability test for fire enclosure materials of equipment with a steady state power exceeding 4 000 W		N/A
	Samples, material..... :		—
	Wall thickness (mm)..... :		—
	Conditioning (°C)..... :		—
T	MECHANICAL STRENGTH TESTS		P
T.1	General		P
T.2	Steady force test, 10 N :	(See appended table T.2)	P
T.3	Steady force test, 30 N :		N/A
T.4	Steady force test, 100 N :	(See appended table T.4)	P
T.5	Steady force test, 250 N :		N/A
T.6	Enclosure impact test		N/A
	Fall test		N/A
	Swing test		N/A
T.7	Drop test :	(See appended table T.7)	P
T.8	Stress relief test..... :	(See appended table T.8)	P
T.9	Glass Impact Test..... :		N/A
☆ T.10	Glass fragmentation test		N/A
	Number of particles counted..... :		N/A
T.11	Test for telescoping or rod antennas		N/A
	Torque value (Nm)		N/A
U	MECHANICAL STRENGTH OF CATHODE RAY TUBES (CRT) AND PROTECTION AGAINST THE EFFECTS OF IMPLOSION		N/A
U.1	General		N/A
	Instructional safeguard :		N/A
U.2	Test method and compliance for non-intrinsically protected CRTs		N/A
U.3	Protective screen		N/A
V	DETERMINATION OF ACCESSIBLE PARTS		P
V.1	Accessible parts of equipment		P
V.1.1	General		P
V.1.2	Surfaces and openings tested with jointed test probes		P
V.1.3	Openings tested with straight unjointed test probes		P
V.1.4	Plugs, jacks, connectors tested with blunt probe		N/A
V.1.5	Slot openings tested with wedge probe		N/A





IEC 62368-1			
Clause	Requirement + Test	Result - Remark	Verdict
V.1.6	Terminals tested with rigid test wire		N/A
V.2	Accessible part criterion		P
X	ALTERNATIVE METHOD FOR DETERMINING CLEARANCES FOR INSULATION IN CIRCUITS CONNECTED TO AN AC MAINS NOT EXCEEDING 420 V PEAK (300 V RMS)		N/A
	Clearance..... :		N/A
Y	CONSTRUCTION REQUIREMENTS FOR OUTDOOR ENCLOSURES		N/A
Y.1	General		N/A
Y.2	Resistance to UV radiation		N/A
Y.3	Resistance to corrosion		N/A
Y.3	Resistance to corrosion		N/A
Y.3.1	Metallic parts of outdoor enclosures are resistant to effects of water-borne contaminants by..... :		N/A
Y.3.2	Test apparatus		N/A
Y.3.3	Water – saturated sulphur dioxide atmosphere		N/A
Y.3.4	Test procedure..... :		N/A
Y.3.5	Compliance		N/A
Y.4	Gaskets		N/A
Y.4.1	General		N/A
Y.4.2	Gasket tests		N/A
Y.4.3	Tensile strength and elongation tests		N/A
	Alternative test methods..... :		N/A
Y.4.4	Compression test		N/A
Y.4.5	Oil resistance		N/A
Y.4.6	Securing means		N/A
Y.5	Protection of equipment within an outdoor enclosure		N/A
Y.5.1	General		N/A
Y.5.2	Protection from moisture		N/A
	Relevant tests of IEC 60529 or Y.5.3..... :		N/A
Y.5.3	Water spray test		N/A
Y.5.4	Protection from plants and vermin		N/A
Y.5.5	Protection from excessive dust		N/A
Y.5.5.1	General		N/A
Y.5.5.2	IP5X equipment		N/A
Y.5.5.3	IP6X equipment		N/A
Y.6	Mechanical strength of enclosures		N/A





IEC 62368-1			
Clause	Requirement + Test	Result - Remark	Verdict
Y.6.1	General		N/A
Y.6.2	Impact test..... :		N/A



Shenzhen LCS Compliance Testing Laboratory Ltd.
 Add: Room 101, 201, Building A and Room 301, Building C, Juji Industrial Park, Yabianxueziwei, Shajing Street,
 Bao'an District, Shenzhen, Guangdong, China
 Tel: +(86) 0755-8259 1330 | E-mail: webmaster@lcs-cert.com | www.lcs-cert.com
 Scan code to check authenticity



IEC 62368-1			
Clause	Requirement + Test	Result - Remark	Verdict

5.2	TABLE: Classification of electrical energy sources						P
Supply Voltage	Location (e.g. circuit designation)	Test conditions	Parameters				ES Class
			U (V)	I (mA)	Type ¹	Additional Info ²	
264Vac	Primary circuits supplied by a.c., mains supply	Normal	264Vac	--	--	--	ES3 (declaration)
		Abnormal	--	--	--	--	
		Single fault	--	--	--	--	
264Vac	T2 pin A to B	Normal	98.6Vpk, 30.8Vrms	--	--	99.2k	ES1
		Abnormal (see table B.3 for details)	--	--	--	--	
		Single fault (see table B.4 for details)	--	--	--	--	
264Vac	T2 pin A to B (after Q203)	Normal	29.6Vdc	--	--	--	ES1
		Abnormal (see table B.3 for details)	--	--	--	--	
		Single fault (see table B.4 for details)	--	--	--	--	
264Vac	T3 pin A to B	Normal	92.4Vpk, 27.5Vrms	--	--	97.8k	ES1
		Abnormal (see table B.3 for details)	--	--	--	--	
		Single fault (see table B.4 for details)	--	--	--	--	
264Vac	T3 pin A to B (after Q302)	Normal	29.6Vdc	--	--	--	ES1
		Abnormal (see table B.3 for details)	--	--	--	--	
		Single fault (see table B.4 for details)	--	--	--	--	
264Vac	Output "+" to "-"	Normal	27.94Vdc Max	--	--	--	ES1
		Abnormal (see table B.3 for details)	27.94Vdc Max	--	--	--	



Shenzhen LCS Compliance Testing Laboratory Ltd.

Add: Room 101, 201, Building A and Room 301, Building C, Juji Industrial Park, Yabianxueziwei, Shajing Street, Bao'an District, Shenzhen, Guangdong, China

Tel: +(86) 0755-8259 1330 | E-mail: webmaster@lcs-cert.com | www.lcs-cert.com

Scan code to check authenticity



IEC 62368-1							
Clause	Requirement + Test	Result - Remark					Verdict
		Single fault (see table B.3, B.4 for details)	0	--	--	--	
264Vac	Output "+/-" to earth	Normal	--	0.169mApk	--	60	ES1
		Abnormal (see table B.3 for details)	--	0.169mApk	--	60	
		Single fault (see table B.4 for details)	--	0.169mApk (for unit shutdown) 0.177mApk (for fuse open)	--	60	
264Vac	Plastic enclosure to earth	Normal	--	0.005mApk	--	--	ES1
		Abnormal (see table B.3 for details)	--	0.005mApk	--	--	
		Single fault (see table B.4 for details)	--	0.005mApk (for unit shutdown) 0.007mApk (for fuse open)	--	--	

Supplementary information: SC: short circuit.

5.4.1.8	TABLE: Working voltage measurement				P
Location	RMS voltage (V)	Peak voltage (V)	Frequency (kHz)	Comments	
T2 pin 1-A	344	582	99.2	--	
T2 pin 2-A	301	508	99.2	--	
T2 pin 3-A	183	384	99.2	--	
T2 pin 4-A	180	388	99.2	--	
T2 pin 1-B	355	620	99.2	Max working voltage	
T2 pin 2-B	299	404	99.2	--	
T2 pin 3-B	187	364	99.2	--	
T2 pin 4-B	184	460	99.2	--	
T3 pin 1-A	366	604	97.8	Max working voltage	





IEC 62368-1				
Clause	Requirement + Test		Result - Remark	Verdict
T3 pin 2-A	299	404	97.8	--
T3 pin 3-A	180	368	97.8	--
T3 pin 4-A	184	444	97.8	--
T3 pin 1-B	347	588	97.8	--
T3 pin 2-B	303	488	97.8	--
T3 pin 3-B	184	392	97.8	--
T3 pin 4-B	180	396	97.8	--
CY2 primary pin – secondary pin	168	344	0.06	--
OP1 pin1-3	214	356	0.06	--
OP1 pin1-4	214	352	0.06	--
OP1 pin2-3	214	354	0.06	--
OP1 pin2-4	214	352	0.06	--
Supplementary information:				

5.4.1.10.2 TABLE: Vicat softening temperature of thermoplastics				N/A
Method..... :			ISO 306 / B50	—
Object/ Part No./Material	Manufacturer/trademark	Thickness (mm)	T softening (°C)	
--	--	--	--	
Supplementary information:				

5.4.1.10.3 TABLE: Ball pressure test of thermoplastics					P
Allowed impression diameter (mm)..... :				≤ 2 mm	—
Object/Part No./Material	Manufacturer/trademark	Thickness (mm)	Test temperature (°C)	Impression diameter (mm)	
Plug holder/ HN-1064(+)	See 4.1.2	See 4.1.2	125	1.4	
Plug holder/ LUPOY EF1006F(m)(f1)	See 4.1.2	See 4.1.2	125	1.5	
Supplementary information:					

5.4.2, 5.4.3 TABLE: Minimum Clearances/Creepage distance								P
Clearance (cl) and creepage distance (cr) at/of/between:	U _p (V)	U _{rms} (V)	Freq ¹⁾ (kHz)	Required cl (mm)	cl (mm)	E.S. ²⁾ (V)	Required cr (mm)	cr (mm)
Line and Neutral before fuse F1 (BI)	420	240	0.06	1.5	2.8	--	2.4	2.8





IEC 62368-1								
Clause	Requirement + Test				Result - Remark			Verdict

Different polarity of fuse F1 on PCB trace (BI)	420	240	0.06	1.5	2.8	--	2.4	2.8
Primary trace to secondary trace under CY1 (RI)	420	240	0.06	3.0	7.5	--	4.8	7.5
Primary trace to secondary trace under CY2 (RI)	420	240	0.06	3.0	7.5	--	4.8	7.5
Primary trace to secondary trace under OP1 (RI)	420	240	0.06	3.0	7.5	--	4.8	7.5
Primary trace to secondary trace under OP2 (RI)	420	240	0.06	3.0	7.5	--	4.8	7.5
Primary trace to secondary trace under OP3 (RI)	420	240	0.06	3.0	7.5	--	4.8	7.5
Primary trace to secondary trace under OP4 (RI)	420	240	0.06	3.0	7.5	--	4.8	7.5
Primary trace to secondary trace under T2 (RI)	620	366	99.2	3.0	4.6	--	7.4	8.0
Core to secondary pin of T2 (RI)	620	366	99.2	3.0	4.6	--	7.4	8.0
Primary trace to secondary trace under T3 (RI)	620	366	99.2	3.0	4.6	--	7.4	8.0
Core to secondary pin of T3 (RI)	620	366	99.2	3.0	4.6	--	7.4	8.0
Primary part to accessible enclosure (RI)	420	250	0.06	3.0	5.2	--	4.8	5.2

Supplementary information:

- 1) Only for frequency above 30 kHz
 - 2) Complete Electric Strength voltage (E.S. (V) when 5.4.2.4 applied)
- T2, T3 core is considered as primary part
Triple insulated wire used as secondary winding.

5.4.4.2	TABLE: Minimum distance through insulation				P
Distance through insulation (DTI) at/of	Peak voltage (V)	Insulation	Required DTI (mm)	Measured DTI (mm)	



Shenzhen LCS Compliance Testing Laboratory Ltd.
 Add: Room 101, 201, Building A and Room 301, Building C, Juji Industrial Park, Yabianxueziwei, Shajing Street, Bao'an District, Shenzhen, Guangdong, China
 Tel: +(86) 0755-8259 1330 | E-mail: webmaster@lcs-cert.com | www.lcs-cert.com
 Scan code to check authenticity



IEC 62368-1				
Clause	Requirement + Test	Result - Remark		Verdict
Plastic enclosure	420	Reinforced	0.4	See table 4.1.2
Bobbin(T1)	620	Reinforced	0.4	See table 4.1.2
Supplementary information:				

5.4.4.9	TABLE: Solid insulation at frequencies >30 kHz						P
Insulation material	E_P	Frequency (kHz)	K_R	Thickness d (mm)	Insulation	V_{PW} (Vpk)	
Bobbin (T1)	17	99.2	0.71	0.4	Reinforced	620	
Supplementary information:							

5.4.9	TABLE: Electric strength tests				P
Test voltage applied between:	Voltage shape (Surge, Impulse, AC, DC, etc.)		Test voltage (V)	Breakdown Yes / No	
Basic/supplementary:					
Between L and N before F1 (F1 disconnected)	DC		2500V	No	
Reinforced:					
L/N to output terminal	DC		4000V	No	
L/N to enclosure wrapped with metal foil	DC		4000V	No	
Transformer T1: primary to secondary winding	DC		4000V	No	
Transformer T1: secondary winding to core	DC		4000V	No	
One layer of insulation tape used for transformer (T1)	DC		4000V	No	
Insulation sheet	DC		4000V	No	
Supplementary information:					

5.5.2.2	TABLE: Stored discharge on capacitors					P
Location	Supply voltage (V)	Operating and fault condition ¹⁾	Switch position	Measured voltage (Vpk)	ES Class	
L to N	264V/ 60Hz	N	--	12	ES1	
--	264V/ 60Hz	S (R1)	--	20	ES1	
Supplementary information:						
X-capacitors installed for testing: see appended table 4.1.2						
<input checked="" type="checkbox"/> bleeding resistor rating: see appended table 4.1.2						
<input checked="" type="checkbox"/> ICX: see appended table 4.1.2						





IEC 62368-1			
Clause	Requirement + Test	Result - Remark	Verdict

- 1) N – Normal operating condition (e.g., normal operation, or open fuse);
- 2) S – Single fault condition (Bleeder Resistor open circuit)

5.6.6	TABLE: Resistance of protective conductors and terminations				N/A
Location	Test current (A)	Duration (min)	Voltage drop (V)	Resistance (Ω)	
--	--	--	--	--	
Supplementary information:					

5.7.4	TABLE: Unearthed accessible parts					P
Location	Operating and fault conditions	Supply Voltage (V)	Parameters			ES class
			Voltage (V _{rms} or V _{pk})	Current (A _{rms} or A _{pk})	Freq. (Hz)	
See table 5.2						
Supplementary information:						
Abbreviation: SC= short circuit; OC= open circuit						

5.7.5	TABLE: Earthed accessible conductive part				N/A
Supply voltage (V).....:					—
Phase(s)		<input type="checkbox"/> Single Phase; <input type="checkbox"/> Three Phase: <input type="checkbox"/> Delta <input type="checkbox"/> Wye			
Power Distribution System		<input type="checkbox"/> TN <input type="checkbox"/> TT <input type="checkbox"/> IT			
Location	Fault Condition No in IEC 60990 clause 6.2.2	Touch current (Ma)	Comment		
--	--	--	--		
Supplementary Information:					

5.8	TABLE: Backfeed safeguard in battery backed up supplies					N/A
Location	Supply voltage (V)	Operating and fault condition	Time (s)	Open-circuit voltage (V)	Touch current (A)	ES Class
--	--	--	--	--	--	--
Supplementary information:						
Abbreviation: SC= short circuit, OC= open circuit						

6.2.2	TABLE: Power source circuit classifications						P
Location	Operating and	Voltage (V)	Current (A)	Max.	Time (S)	PS class	





IEC 62368-1			
Clause	Requirement + Test	Result - Remark	Verdict

	fault condition			Power ¹⁾ (W)		
Internal circuit	--	--	--	--	--	PS3 (declaration)
USB-C1 Output (5VDC, 3A)	Normal	4.98	3.22	16.04	5	PS2
USB-C1 Output (9VDC, 3A)	Normal	8.81	3.57	31.45	5	PS2
USB-C1 Output (12VDC, 3A)	Normal	11.83	3.56	42.11	5	PS2
USB-C1 Output (15VDC, 3A)	Normal	14.73	3.57	52.59	5	PS2
USB-C1 Output (20VDC, 5A)	Normal	19.60	5.98	117.21	5	PS3
USB-C1 Output (28VDC, 5A)	Normal	27.42	5.96	163.42	5	PS3
USB-C1 Output (4VDC, 5A)	Normal	3.94	5.21	20.53	5	PS2
USB-C1 Output (21VDC, 4A)	Normal	20.80	4.21	87.57	5	PS2
USB-C2 Output (5VDC, 3A)	Normal	5.15	3.55	18.28	5	PS2
USB-C2 Output (9VDC, 3A)	Normal	8.96	3.62	32.44	5	PS2
USB-C2 Output (12VDC, 3A)	Normal	11.84	3.61	42.74	5	PS2
USB-C2 Output (15VDC, 3A)	Normal	14.84	3.63	53.87	5	PS2
USB-C2 Output (20VDC, 5A)	Normal	19.72	6.38	125.81	5	PS3
USB-C2 Output (4VDC, 5A)	Normal	3.78	5.48	20.71	5	PS2
USB-C2 Output (21VDC, 3A)	Normal	20.68	4.49	92.85	5	PS2
USB-C3 Output (5VDC, 3A)	Normal	5.11	3.84	19.62	5	PS2
USB-C3 Output (9VDC, 3A)	Normal	9.11	3.93	35.80	5	PS2
USB-C3 Output (12VDC, 2.5A)	Normal	12.12	3.27	39.63	5	PS2
USB-C3 Output (15VDC, 2A)	Normal	15.12	2.6	39.31	5	PS2
USB-C3 Output (20VDC, 1.5A)	Normal	20.10	1.93	38.79	5	PS2
USB-C3 Output (4VDC, 3A)	Normal	4.11	3.47	14.26	3	PS1
USB-C3 Output (11VDC, 3A)	Normal	11.10	3.54	39.29	5	PS2
All of terminal Output	Single fault – SC: OP1 Pin1-2	0*	0*	0*	3	PS1





IEC 62368-1			
Clause	Requirement + Test	Result - Remark	Verdict

All of terminal Output	Single fault – SC: OP1 Pin3-4	0*	0*	0*	3	PS1
All of terminal Output	Single fault – OC: OP1 Pin1	0*	0*	0*	3	PS1
All of terminal Output	Single fault – OC: OP1 Pin3	0*	0*	0*	3	PS1

Supplementary information:

Abbreviation: SC= short circuit, OC= open circuit;

- 1) Measured after 3 s for PS1 and measured after 5 s for PS2 and PS3.
- 2) * Unit shut down immediately, no hazards.

6.2.3.1	TABLE: Determination of Arcing PIS				P
Location	Open circuit voltage after 3 s (Vpk)	Measured r.m.s current (A)	Calculated value	Arcing PIS? Yes / No	
All primary circuits / parts	--	--	--	Yes (declaration)	

Supplementary information:

An Arcing PIS requires a minimum of 50 V (peak) a.c. or d.c. An Arcing PIS is established when the product of the open circuit voltage (V_p) and normal operating condition rms current (I_{rms}) is greater than 15.

All conductors and devices are considered as PIS.

6.2.3.2	TABLE: Determination of resistive PIS			P
Location	Operating and fault condition	Dissipate power (W)	Resistive PIS? Yes / No	
All primary circuits / parts	--	--	Yes (declaration)	

Supplementary information:

Abbreviation: SC= short circuit; OC= open circuit

A combination of voltmeter, VA and ammeter IA may be used instead of a wattmeter.

If a separate voltmeter and ammeter are used, the product of (VA x IA) is used to determine Resistive PIS classification.

A Resistive PIS: (a) dissipates more than 15 W, measured after 30 s of normal operation, or (b) under single fault conditions has either a power exceeding 100 W measured immediately after the introduction of the fault if electronic circuits, regulators or PTC devices are used, or has an available power exceeding 15 W measured 30 s after introduction of the fault.

All conductors and devices are considered as PIS.

8.5.5	TABLE: High pressure lamp	N/A
--------------	----------------------------------	-----



Shenzhen LCS Compliance Testing Laboratory Ltd.
 Add: Room 101, 201, Building A and Room 301, Building C, Juji Industrial Park, Yabianxueziwei, Shajing Street, Bao'an District, Shenzhen, Guangdong, China
 Tel: +(86) 0755-8259 1330 | E-mail: webmaster@lcs-cert.com | www.lcs-cert.com
 Scan code to check authenticity



IEC 62368-1				
Clause	Requirement + Test	Result - Remark	Verdict	
Lamp manufacturer	Lamp type	Explosion method	Longest axis of glass particle (mm)	Particle found beyond 1 m Yes / No
--	--	--	--	--
Supplementary information:				

9.6	TABLE: Temperature measurements for wireless power transmitters								N/A
Supply voltage (V).....:								—	
Max. transmit power of transmitter (W).....:								—	
Foreign objects	w/o receiver and direct contact		with receiver and direct contact		with receiver and at distance of 2 mm		with receiver and at distance of 5 mm		
	Object (°C)	Ambient (°C)	Object (°C)	Ambient (°C)	Object (°C)	Ambient (°C)	Object (°C)	Ambient (°C)	
--	--	--	--	--	--	--	--	--	
Supplementary information:									

5.4.1.4, 9.3, B.1.5, B.2.6	TABLE: Temperature measurements					P
Supply voltage (V)	90V/60Hz Vertical	90V/60Hz Horizontal	264V/50Hz Vertical	264V/50Hz Horizontal	—	
Ambient T _{min} (°C)	--		--		—	
Ambient T _{max} (°C)	--		--		—	
T _{ma} (°C)	--		--		—	
Maximum measured temperature T of part/at:	T (°C)					Allowed T _{max} (°C)
Output: 28Vdc 5A						
Plug holder (inside)	40.3	39.5	39.3	38.5	Ref.	
LF2 winding	108.2	106.7	105.6	104.1	130	
CX2 body	82.5	81.1	80.5	79.1	110	
EC1 body	97.8	96.6	95.4	94.2	105	
EC2 body	96.7	95.3	94.3	93.0	105	
NTC1 body	101.0	99.7	98.5	97.3	Ref.	
PCB near BD2	111.9	110.8	109.2	108.1	130	
T1 winding	106.3	105.1	103.7	102.5	130	
T4 winding	106.9	106.2	104.3	103.6	130	





IEC 62368-1					
Clause	Requirement + Test			Result - Remark	Verdict

T2 winding	108.7	107.3	106.1	104.6	110
T2 core	105.8	103.4	103.2	100.9	110
T3 winding	104.1	102.6	101.6	100.1	110
T3 core	100.4	97.9	97.9	95.6	110
CR4 body	104.0	102.6	101.5	100.1	105
PCB near Q602	101.3	99.8	98.8	97.4	130
CY1 body	85.8	84.7	83.7	82.6	125
OP1 body	101.0	99.5	98.5	97.1	110
PCB near GAN1	118.2	116.5	115.3	113.7	130
PCB near GAN3	109.2	107.8	106.5	105.2	130
Plastic enclosure inside near T2 top	96.7	94.5	90.5	89.3	Ref.
Plastic enclosure outside near T2 top	75.8	75.0	74.2	73.5	77
Ambient	25.0	25.0	25.0	25.0	--

Supplementary information:

* Temperature limit for TS1 of accessible enclosure according to Table 38 to be measured at normal ambient temperature.

Note 1: The apparatus was submitted and evaluated for maximum manufacturer's recommended ambient (Tma) of 25°C.

Note 2: The temperatures were measured under the worst case normal mode defined in clause B.2.1.

Note 3. Temperature limits are calculated as follows:

Winding components providing safety isolation:

Class B → T_{max} = 120 - 10 = 110°C

Temperature T of winding:	t ₁ (°C)	R ₁ (Ω)	t ₂ (°C)	R ₂ (Ω)	T (°C)	Allowed T _{max} (°C)	Insulation class
--	--	--	--	--	--	--	--

Supplementary information:

B.2.5		TABLE: Input test					P
U (V)	Hz	I (A)	I _{rated} (A)	P (W)	Fuse #	I _{fuse} (A)	Condition/status
90	50	1.723	--	153.7	F1	1.723	Output: 28Vdc 5A
100	50	1.563	3	153.9	F1	1.563	
240	50	0.659	3	152.3	F1	0.659	
264	50	0.623	--	152.4	F1	0.623	





IEC 62368-1						
Clause	Requirement + Test			Result - Remark		Verdict
90	60	1.703	--	152.1	F1	1.703
100	60	1.546	3	151.4	F1	1.546
240	60	0.654	3	151.6	F1	0.654
264	60	0.642	--	152.3	F1	0.642
Supplementary information:						
The maximum measured current under rated voltage did not exceed 110% of the rated current.						

B.3, B.4 TABLE: Abnormal operating and fault condition tests						P
Ambient temperature T _{amb} (°C).....					25°C, if not specified	—
Power source for EUT: Manufacturer, model/type, output rating....					--	—
Component No.	Condition	Supply voltage (V)	Test time	Fuse no.	Fuse current (A)	Observation
Output (28VDC, 5A)	OL	264	4hrs 32mins	F1	0.642A→ 0.681A→ 0.715A→ 0.075A	Unit shut down when output over loaded to <u>2.60A</u> . Recoverable, no hazardous. T2 winding: 124.5°C T2 core: 120.3°C T3 winding: 118.5°C T3 core: 115.3°C Plastic enclosure outside near T2 top: 85.6°C Ambient: 25.0°C
BD1 pin "+-"	SC	264	1s	F1	0	F1 opened immediately, no hazard.
EC1	SC	264	1s	F1	0	F1 opened immediately, no hazard.
T2 pin 1-2	SC	264	10min	F1	0.01	Unit shutdown immediately recoverable, no hazard.
T2 pin 3-4	SC	264	10min	F1	0.01	Unit shutdown immediately recoverable, no hazard.
T2 pin A-B	SC	264	10min	F1	0.01	Unit shutdown immediately recoverable, no hazard.
OP1 pin1-2	SC	264	10min	F1	0.01	Unit shutdown immediately recoverable, no hazard.
OP1 pin3-4	SC	264	10min	F1	0.01	Unit shutdown immediately recoverable, no hazard.
OP1 pin1	OC	264	10min	F1	0.01	Unit shutdown immediately recoverable, no hazard.





IEC 62368-1			
Clause	Requirement + Test	Result - Remark	Verdict

OP1 pin3	OC	264	10min	F1	0.01	Unit shutdown immediately recoverable, no hazard.
Q602	SC	264	10min	F1	0.01	Unit shutdown immediately recoverable, no hazard.
CR4	SC	264	10min	F1	0.01	Unit shutdown immediately recoverable, no hazard.
USB-C output	SC	264	10min	F1	0.01	Unit shutdown immediately recoverable, no hazard.

Supplementary information:

Test table is provided to record fault conditions for all applicable energy sources including Thermal burn injury. Column "Abnormal/Fault." Specify if test condition by indicating "Single Fault" then the condition for Clause B.4.

- 1) SC: Short-circuited; OC: Open-circuited; OL: Overload.
- 2) The test result shown all safeguards remained effective and didn't lead to a single fault condition during abnormal operating condition; In addition all safeguards complied with applicable requirements in this standard after restoration of normal operating conditions.
- 3) The test result showed no Class 1 or 2 energy source become Class 3 level during and after single fault condition.
- 4) For component damaged without fuse opened condition have been repeated twice (three tests total) with same result.
- 5) The tests where fuse opened were repeated with each source of fuse and with same result observed.

An external protective device rated 32A was used to protect against excessive currents and short-circuits in the primary circuit supplying the EUT during all fault tests.

M.3	TABLE: Protection circuits for batteries provided within the equipment						N/A
Is it possible to install the battery in a reverse polarity position?.....:						—	
Equipment Specification	Charging						
	Voltage (V)			Current (A)			
	--			--			
Manufacturer/type	Battery specification						
	Non-rechargeable batteries			Rechargeable batteries			
	Discharging current (A)	Unintentional charging current (A)	Charging		Discharging current (A)	Reverse charging current (A)	
			Voltage (V)	Current (A)			
	--	--	--	--	--	--	
Note: The tests of M.3.2 are applicable only when above appropriate data is not available.							
Specified battery temperature (°C).....:							
Component No.	Fault condition	Charge/discharge mode	Test time	Temp. (°C)	Current (A)	Voltage (V)	Observation
--	--	--	--	--	--	--	--
Supplementary information:							



Shenzhen LCS Compliance Testing Laboratory Ltd.
 Add: Room 101, 201, Building A and Room 301, Building C, Juji Industrial Park, Yabianxueziwei, Shajing Street, Bao'an District, Shenzhen, Guangdong, China
 Tel: +(86) 0755-8259 1330 | E-mail: webmaster@lcs-cert.com | www.lcs-cert.com
 Scan code to check authenticity



IEC 62368-1			
Clause	Requirement + Test	Result - Remark	Verdict

Abbreviation: SC= short circuit; OC= open circuit NL= no chemical leakage; NS= no spillage of liquid; NE= no explosion; NF= no emission of flame or expulsion of molten metal.

M.4.2	TABLE: Charging safeguards for equipment containing a secondary lithium battery				N/A
Maximum specified charging voltage (V)..... :					—
Maximum specified charging current (A)					—
Highest specified charging temperature (°C)					
Lowest specified charging temperature (°C)					
Battery manufacturer/type	Operating and fault condition	Measurement			Observation
		Charging voltage (V)	Charging current (A)	Temp. (°C)	
--	--	--	--	--	--
Supplementary information:					
Abbreviation: SC= short circuit; OC= open circuit; MSCV= maximum specified charging voltage; MSCC= maximum specified charging current; HSCT= highest specified charging temperature; LSCT= lowest specified charging temperature					

Q.1	TABLE: Circuits intended for interconnection with building wiring (LPS)					N/A	
Output Circuit	Condition	U _{oc} (V)	Time (s)	I _{sc} (A)		S (VA)	
				Meas.	Limit	Meas.	Limit
--	--	--	--	--	--	--	--
--	--	--	--	--	--	--	--
Supplementary Information:							
SC: Short Circuit, OC= open circuit							

T.2, T.3, T.4, T.5	TABLE: Steady force test					P
Part/Location	Material	Thickness (mm)	Probe	Force (N)	Test Duration (s)	Observation





IEC 62368-1						
Clause	Requirement + Test				Result - Remark	Verdict
Enclosure	Plastic	1)	--	100	5	Enclosure remained intact, no crack/ opening developed. Internal ES3, TS3 were not accessible after test. No insulation breakdown.
Internal parts	--	--	--	10	5	No insulation breakdown. No reduction the clearances and creepage distances
Supplementary information: 1). See appended tale 4.1.2.						

T.6, T.9	TABLE: Impact test					N/A
Location/part	Material	Thickness (mm)	Height (mm)	Observation		
--	--	--	--	--		
Supplementary information:						

T.7	TABLE: Drop test					P
Location/part	Material	Thickness (mm)	Height (mm)	Observation		
Enclosure (Top)	Plastic	1)	1000	After the drop test, enclosure remained intact, no cracking/opening developed in the enclosure joint. Internal ES3, TS3 were not accessible after test. No insulation breakdown.		
Enclosure (Side)	Plastic	1)	1000	After the drop test, enclosure remained intact, no cracking/opening developed in the enclosure joint. Internal ES3, TS3 were not accessible after test. No insulation breakdown.		
Enclosure (Bottom)	Plastic	1)	1000	After the drop test, enclosure remained intact, no cracking/opening developed in the enclosure joint. Internal ES3, TS3 were not		





IEC 62368-1			
Clause	Requirement + Test	Result - Remark	Verdict

			accessible after test. No insulation breakdown.
Supplementary information: 1). See appended tale 4.1.2.			

T.8	TABLE: Stress relief test					P
Location/Part	Material	Thickness (mm)	Oven Temperature (°C)	Duration (h)	Observation	
Enclosure	Plastic	min.1.5mm	107	7	Enclosure remained intact, no cracking/opening developed in the enclosure joint. Internal ES3, TS3 were not accessible after test. No insulation breakdown.	
Supplementary information:						

X	TABLE: Alternative method for determining minimum clearances distances				N/A
Clearance distanced between:	Peak of working voltage (V)	Required cl (mm)	Measured cl (mm)		
--	--	--	--		
Supplementary information:					





IEC 62368-1			
Clause	Requirement + Test	Result - Remark	Verdict

4.1.2	TABLE: List of critical components					P
Object / part No.	Manufacturer/ trademark	Type / model	Technical data	Standard	Mark(s) of conformity ¹	
Plug holder & enclosure	LOTTE CHEMICAL CORPORATION	HN-1064(+)	Polycarbonat e (PC), min. V-0, 130°C, min. thickness 2.0mm	Applicable parts of IEC/EN 62368-1, UL 94, UL746C	Tested with applianc e and UL E115797	
(Alternative)	LG CHEM LTD	LUPOY EF1006F(m)(f1)	PC V-0.120°C, min thickness: 2.0mm	UL 94,UL746C	UL E67171 & tested with appliance	
Input lead wire	DONGGUAN YIAO ELECTRONICS CO.LTD	3239	VW-1, min. 300V, min, 24AWG, min. 200°C	Applicable parts of IEC/EN 62368-1, UL 758	Tested with appliance and UL E348933	
Input lead wire (Alternative)	Interchangeable	3239	Min. 22AWG, min. 300Vac, min.125°C, VW- 1	Applicable parts of IEC/EN 62368-1, UL 758	UL	
PCB	SHENZHEN RUIBOXINGYUAN ELECTRONICS CO., LTD	RBXY-2, RBXY-3	V-0, 130°C	UL 94, UL 796, CSA C22.2 No. 0.17	UL E339633	
PCB (Alternative)	SHENZHEN RUIBOXINGYUAN ELECTRONICS CO., LTD	KB-6160	V-0, 130°C	UL 94, UL 796, CSA C22.2 No. 0.17	UL E123995	
Fuse(F1)	Dongguan Reomax Electronics Technology Co Ltd	MTS	T5A, 250VAC	IEC/EN 60127-1, IEC/EN 60127-3, UL248-1, UL248-14	VDE 4003942 0 UL E340427	
Fuse(F1) (Alternative)	DONGGUAN ANLU ELECTRONIC TECHNOLOGY CO., LTD.	AMT	T5A, 250VAC	IEC/EN 60127-1, IEC/EN 60127-3, UL248-1, UL248-14	VDE 40047322 UL E365174	
Transistor (GAN5)	ANSI Semiconductor (China) Co., LTD	Interchangeable	Min.11A, Min.650V	IEC/EN 62368-1	Test with appliance	
Bleeder resistor (R1, R3)	Shenzhen Zhengyang Xing Electronic Technology Co., LTD	Interchangeable	Rated for each Min.3Mohm, Min.1/4W	IEC/EN 62368-1	Test with appliance	





IEC 62368-1					
Clause	Requirement + Test	Result - Remark			Verdict
Bleeder IC ((U601 U201 OP101)	ON SEMICONDUCTOR	NCP1342	240VAC, associated capacitor 0.0047-4.7 uf, resistor:1k-10kohm	IEC 62368-1	UL CB cert. no.: DK-60610-A4-UL Report No. E486692-47875667 09-1
Optocoupler (OP1, OP2, OP3, OP4)	Shenzhen Orient Components Co Ltd	OR-1008	Reinforced insulation, Ext. cr/cl ≥8.0, 110°C	IEC/EN 60747-5-5, UL 1577, CSA Component Acceptance Service Notice 5A	VDE 40029733 UL E323844
Y-capacitor (CY3)	Sichuan Teruixiang Technology International Co Ltd	TRX	2.2nF, min. 400Vac, 105°C,	UL60384-14	UL E315719 ENEC-02084
Y-capacitor (CY1)	Sichuan Teruixiang Technology International Co Ltd	TRX	220pF, min. 400Vac, 105°C,	UL60384-14	UL E315719 ENEC-02084
X-capacitor (CX2)	Guangdong JURCC electronics Co., LTD.	MPX X2	Min.470nF, Min. 275V, Min. 110°C X2	IEC/EN/UL 60384-14	VDE 40034920 UL E343072
Bridge Diode (BD1, BD2)	Interchangeable	Interchangeable	Min. 1000V, Min. 8A	IEC/EN 62368-1	Test with appliance
Electrolytic capacitor (EC1, EC2)	Interchangeable	Interchangeable	Min.39uF, Min. 450V, Min. 105°C	IEC/EN 62368-1	Test with appliance
Electrolytic capacitor (EC3, EC4)	Interchangeable	Interchangeable	Min.27uF, Min. 450V, Min. 105°C	IEC/EN 62368-1	Test with appliance
Insulation sheet	SABIC INNOVATIVE PLASTICS B V	FR700(GG1)	V-0,125°C, Min. 0.42mm thickness	IEC/EN 62368-1	Tested with appliance and UL E121562
(Alternative)	SICHUAN DONGFANG INSULATING MATERIAL CO LTD	DFR3738A(d)	V-0, 110°C, min thickness 0.43mm	UL 94 IEC/EN 62368-1	UL E199019 & tested with appliance
Choke (LF2)	SHENZHEN BAIWEI ELECTRONICS CO.,LTD	T14*9*5-20MH	130°C	IEC/EN 62368-1	Test with appliance
- Magnet wire	WUHU COPPER CROWN ELECTRICIAN LTD	*UEW/N/155%	155°C	IEC/EN 62368-1 UL 1446	UL E326270



Shenzhen LCS Compliance Testing Laboratory Ltd.
 Add: Room 101, 201, Building A and Room 301, Building C, Juji Industrial Park, Yabianxueziwei, Shajing Street, Bao'an District, Shenzhen, Guangdong, China
 Tel: +(86) 0755-8259 1330 | E-mail: webmaster@lcs-cert.com | www.lcs-cert.com
 Scan code to check authenticity



IEC 62368-1					
Clause	Requirement + Test	Result - Remark			Verdict
- Insulation tape	Jingjiang Yahua Pressure Sensitive Glue Co Ltd	CT*(b)(g)	130°C	IEC/EN 62368-1	Tested with appliance and UL E165111
- Varnish	Zhuhai Changxian New Materials Technology Co Ltd	E962	Min. 130°C	IEC/EN 62368-1	Tested with appliance and UL E335405
Choke (LF1)	SHENZHEN BAIWEI ELECTRONICS CO.,LTD	9*5*3 -3MH	130°C	IEC/EN 62368-1	Test with appliance
- Tube	DONGGUAN LINGFREEHAR EPLA STICSPEODUCT CO LTD	LING FREE PTF TUBE	600V, 200°C, VW-1	IEC/EN 62368-1	Tested with appliance and UL E352366
- Magnet wire	WUHU COPPER CROWN ELECTRICIAN LTD	*UEW/N/155%	Min.155°C	IEC/EN 62368-1 UL 1446	UL E326270
- Triple insulation wire	Shenzhen Kaizhong Hedong New Materials Co., Ltd.	TIW-B*	Min.130°	IEC/EN 62368-1	VDE 40038861
Choke (L3)	SHENZHEN BAIWEI ELECTRONICS CO.,LTD	044-125 - 40UH	130°C	IEC/EN 62368-1	Test with appliance
- Magnet wire	WUHU COPPER CROWN ELECTRICIAN LTD	*UEW/N/155%	Min.155°C	IEC/EN 62368-1	Tested with appliance and UL E174837
PFC inductance (T1)	SHENZHEN BAIWEI ELECTRONICS CO.,LTD	P1214-PFC	Class B	IEC/EN 62368-1	Tested with appliance
- BOBBIN	CHANG CHUN PLASTICS COLTD	T375J G5/G6	Phenolic, V-0, 150°C, min. 0.71mm thick	IEC/EN 62368-1	Tested with appliance and UL E59481
- Magnet wire	WUHU COPPER CROWN ELECTRICIAN LTD	*UEW/N/155%	Min.155°C	IEC/EN 62368-1 UL 1446	UL E326270
- Triple insulation wire	Shenzhen Kaizhong Hedong New Materials Co., Ltd.	TIW-B*	130°C	IEC/EN 62368-1,	VDE 40038861





IEC 62368-1					
Clause	Requirement + Test	Result - Remark			Verdict
- Tube	Dongguan Ling Free Hardware Plastics Product Co Ltd	LING FREE PTF TUBE	600V, 200°C , VW-1	IEC/EN 62368-1	Tested with appliance and UL E352366
- Insulation tape	Jingjiang Yahua Pressure Sensitive Glue Co Ltd	CT*(b)(g)	130°C	IEC/EN 62368-1	Tested with appliance and UL E165111
- Varnish	Zhuhai Changxian New Materials Technology Co Ltd	E962	Min. 130°C	IEC/EN 62368-1	Tested with appliance and UL E335405
Transformer (T2)	SHENZHEN BAIWEI ELECTRONICS CO.,LTD	P1214-REV1.3	Class B	IEC/EN 62368-1	Tested with appliance
- BOBBIN	CHANG CHUN PLASTICS COLTD	T375J(G5)(G6)	Phenolic, V-0, 150°C, min. thickness 0.70mm	IEC/EN 62368-1 UL 94 UL746B	Tested with appliance and UL E59481
- Magnet wire	WUHU COPPER CROWN ELECTRICIAN LTD	*UEW/N/155%	155°C	IEC/EN 62368-1 UL 1446	UL E326270
- Triple insulation wire used in secondary	Shenzhen Kaizhong Hedong New Materials Co., Ltd.	TIW-B*	130°C	IEC/EN 62368-1	VDE 40038861
- Tube	Dongguan Ling Free Hardware Plastics Product Co Ltd	LING FREE PTF TUBE	600V, 200°C , VW-1	IEC/EN 62368-1	Tested with appliance and UL E352366
- Insulation tape	Jingjiang Yahua Pressure Sensitive Glue Co Ltd	CT*(b)(g)	130°C	IEC/EN 62368-1	Tested with appliance and UL E165111
- Varnish	Zhuhai Changxian New Materials Technology Co Ltd	E962	Min. 130°C	IEC/EN 62368-1	Tested with appliance and UL E335405
Transformer (T3)	SHENZHEN BAIWEI ELECTRONICS CO.,LTD	P1214-V1.1	Class B	IEC/EN 62368-1	Tested with appliance





IEC 62368-1					
Clause	Requirement + Test	Result - Remark			Verdict
- BOBBIN	CHANG CHUN PLASTICS COLTD	T375J G5/G6	Phenolic, V-0, 150°C, min. 0.71mm thick	IEC/EN 62368-1	Tested with appliance and UL E59481
- Magnet wire	WUHU COPPER CROWN ELECTRICIAN LTD	*UEW/N/155%	155°C	IEC/EN 62368-1 UL 1446	UL E326270
- Triple insulation wire	Shenzhen Kaizhong Hedong New Materials Co., Ltd.	TIW-B	130°C	IEC/EN 62368-1	VDE 40038861
- Tube	Dongguan Ling Free Hardware Plastics Product Co Ltd	LING FREE PTF TUBE	600V, 200°C, VW-1	IEC/EN 62368-1	Tested with appliance and UL E352366
- Insulation tape	Jingjiang Yahua Pressure Sensitive Glue Co Ltd	CT*(b)(g)	130°C	IEC/EN 62368-1	Tested with appliance and UL E165111
- Varnish	Zhuhai Changxian New Materials Technology Co Ltd	E962	Min. 130°C	IEC/EN 62368-1	Tested with appliance and UL E335405
Transformer (T4)	SHENZHEN BAIWEI ELECTRONICS CO.,LTD	P1214-PD30W-V1.1	Class B	IEC/EN 62368-1	Tested with appliance
- BOBBIN	CHANG CHUN PLASTICS COLTD	T375J G5/G6	Phenolic, V-0, 150°C, min. 0.71mm thick	IEC/EN 62368-1	Tested with appliance and UL E59481
- Magnet wire	WUHU COPPER CROWN ELECTRICIAN LTD	*UEW/N/155%	155°C	IEC/EN 62368-1 UL 1446	UL E326270
- Triple insulation	Shenzhen Kaizhong Hedong New Materials Co., Ltd.	TIW-B*	130°C	IEC/EN 62368-1	VDE 40038861
- Tube	Dongguan Ling Free Hardware Plastics Product Co Ltd	LING FREE PTF TUBE	600V, 200°C , VW-1	IEC/EN 62368-1	Tested with appliance and UL E352366





IEC 62368-1			
Clause	Requirement + Test	Result - Remark	Verdict

- Insulation tape	Jingjiang Yahua Pressure Sensitive Glue Co Ltd	CT*(b)(g)	130°C	IEC/EN 62368-1	Tested with appliance and UL E165111
- Varnish	Zhuhai Changxian New Materials Technology Co Ltd	E962	Min. 130°C	IEC/EN 62368-1	Tested with appliance and UL E335405

Supplementary information:

- 1) Provided evidence ensures the agreed level of compliance. See OD-CB2039.
- 2) Description line content is optional. Main line description needs to clearly detail the component used for testing.



Shenzhen LCS Compliance Testing Laboratory Ltd.
 Add: Room 101, 201, Building A and Room 301, Building C, Juji Industrial Park, Yabianxueziwei, Shajing Street, Bao'an District, Shenzhen, Guangdong, China
 Tel: +(86) 0755-8259 1330 | E-mail: webmaster@lcs-cert.com | www.lcs-cert.com
 Scan code to check authenticity



Attachment No.1

IEC 62368-1 _ ATTACHMENT			
Clause	Requirement + Test	Result - Remark	Verdict

ATTACHMENT TO TEST REPORT		
IEC 62368-1 BRITAIN GROUP DIFFERENCES AND NATIONAL DIFFERENCES (Audio/video, information and communication technology equipment - Part 1: Safety requirements)		
Differences according to.....:	BS EN IEC 62368-1:2020+A11:2020	
Attachment Form No.....:	EU_GD_IEC62368_1E	
Attachment Originator.....:	UL(Demko)	
Master Attachment.....:	2021-02-04	
Copyright © 2021 IEC System for Conformity Testing and Certification of Electrical Equipment (IECEE), Geneva, Switzerland. All rights reserved.		
	CENELEC COMMON MODIFICATIONS (EN)	P
	Clause numbers in the cells that are shaded light grey are clause references in EN IEC 62368-1:2020+A11:2020. All other clause numbers in that column, except for those in the paragraph below, refers to IEC 62368-1:2018. Clauses, subclauses, notes, tables, figures and annexes which are additional to those in IEC 62368-1:2018 are prefixed "Z".	P
	Add the following annexes: Annex ZA (normative) Normative references to international publications with their corresponding European publications Annex ZB (normative) Special national conditions Annex ZC (informative) A-deviations Annex ZD (informative) IEC and CENELEC code designations for flexible cords	P
1	Modification to Clause 3 .	N/A
3.3.19	Sound exposure <i>Replace 3.3.19 of IEC 62368-1 with the following definitions:</i>	N/A





Attachment No.1

IEC 62368-1 _ ATTACHMENT			
Clause	Requirement + Test	Result - Remark	Verdict
3.3.19.1	<p>momentary exposure level, MEL</p> <p>metric for estimating 1 s sound exposure level from the HD 483-1 S2 test signal applied to both channels, based on EN 50332-1:2013, 4.2.</p> <p>Note 1 to entry: MEL is measured as A-weighted levels in dB.</p> <p>Note 2 to entry: See B.3 of EN 50332-3:2017 for additional information.</p>		N/A
3.3.19.3	<p>sound exposure, E</p> <p>A-weighted sound pressure (p) squared and integrated over a stated period of time, T</p> <p>Note 1 to entry: The SI unit is Pa² s.</p> $E = \int_0^T p(t)^2 dt$		N/A
3.3.19.4	<p>sound exposure level, SEL</p> <p>logarithmic measure of sound exposure relative to a reference value, E_0, typically the 1 kHz threshold of hearing in humans.</p> <p>Note 1 to entry: SEL is measured as A-weighted levels in dB.</p> $SEL = 10 \lg \left(\frac{E}{E_0} \right) \text{ dB}$ <p>Note 2 to entry: See B.4 of EN 50332-3:2017 for additional information.</p>		N/A
3.3.19.5	<p>digital signal level relative to full scale, dBFS</p> <p>levels reported in dBFS are always r.m.s. Full scale level, 0 dBFS, is the level of a dc-free 997-Hz sine wave whose undithered positive peak value is positive digital full scale, leaving the code corresponding to negative digital full scale unused</p> <p>Note 1 to entry: It is invalid to use dBFS for non-r.m.s. levels. Because the definition of full scale is based on a sine wave, the level of signals with a crest factor lower than that of a sine wave may exceed 0 dBFS. In particular, square wave signals may reach +3,01 dBFS.</p>		N/A



Shenzhen LCS Compliance Testing Laboratory Ltd.

Add: Room 101, 201, Building A and Room 301, Building C, Juji Industrial Park, Yabianxueziwei, Shajing Street, Bao'an District, Shenzhen, Guangdong, China

Tel: +(86) 0755-8259 1330 | E-mail: webmaster@lcs-cert.com | www.lcs-cert.com

Scan code to check authenticity



Attachment No.1

IEC 62368-1 _ ATTACHMENT			
Clause	Requirement + Test	Result - Remark	Verdict

2	Modification to Clause 10		N/A
10.6	Safeguards against acoustic energy sources Replace 10.6 of IEC 62368-1 with the following:		N/A
10.6.1.1	<p>Introduction</p> <p>Safeguard requirements for protection against long-term exposure to excessive sound pressure levels from personal music players closely coupled to the ear are specified below. Requirements for earphones and headphones intended for use with personal music players are also covered. A personal music player is a portable equipment intended for use by an ordinary person, that:</p> <ul style="list-style-type: none"> – is designed to allow the user to listen to audio or audiovisual content / material; and – uses a listening device, such as headphones or earphones that can be worn in or on or around the ears; and – has a player that can be body worn (of a size suitable to be carried in a clothing pocket) and is intended for the user to walk around with while in continuous use (for example, on a street, in a subway, at an airport, etc.). <p>EXAMPLES Portable CD players, MP3 audio players, mobile phones with MP3 type features, PDAs or similar equipment.</p> <p>Personal music players shall comply with the requirements of either 10.6.2 or 10.6.3.</p> <p>NOTE 1 Protection against acoustic energy sources from telecom applications is referenced to ITU-T P.360.</p> <p>NOTE 2 It is the intention of the Committee to allow the alternative methods for now, but to only use the dose measurement method as given in 10.6.5 in future. Therefore, manufacturers are encouraged to implement 10.6.5 as soon as possible.</p> <p>Listening devices sold separately shall comply with the requirements of 10.6.6. These requirements are valid for music or video mode only. The requirements do not apply to:</p> <ul style="list-style-type: none"> – professional equipment; 	N/A	





Attachment No.1

IEC 62368-1 _ ATTACHMENT			
Clause	Requirement + Test	Result - Remark	Verdict
	<p>NOTE 3 Professional equipment is equipment sold through special sales channels. All products sold through normal electronics stores are considered not to be professional equipment.</p> <p>– hearing aid equipment and other devices for assistive listening; – the following type of analogue personal music players:</p> <ul style="list-style-type: none"> • long distance radio receiver (for example, a multiband radio receiver or world band radio receiver, an AM radio receiver), and • cassette player/recorder; <p>NOTE 4 This exemption has been allowed because this technology is falling out of use and it is expected that within a few years it will no longer exist. This exemption will not be extended to other technologies.</p> <p>– a player while connected to an external amplifier that does not allow the user to walk around while in use.</p> <p>For equipment that is clearly designed or intended primarily for use by children, the limits of the relevant toy standards may apply.</p> <p>The relevant requirements are given in EN 71-1:2011, 4.20 and the related tests methods and measurement distances apply.</p>		
10.6.1.2	<p>Non-ionizing radiation from radio frequencies in the range 0 to 300 GHz</p> <p>The amount of non-ionizing radiation is regulated by European Council Recommendation 1999/519/EC of 12 July 1999 on the limitation of exposure of the general public to electromagnetic fields (0 Hz to 300 GHz). For intentional radiators, ICNIRP guidelines should be taken into account for Limiting Exposure to Time-Varying Electric, Magnetic, and Electromagnetic Fields (up to 300 GHz). For hand-held and body mounted devices, attention is drawn to EN 50360 and EN 50566.</p>		N/A
10.6.2	Classification of devices without the capacity to estimate sound dose		N/A
10.6.2.1	General		N/A



Shenzhen LCS Compliance Testing Laboratory Ltd.

Add: Room 101, 201, Building A and Room 301, Building C, Juji Industrial Park, Yabianxueziwei, Shajing Street, Bao'an District, Shenzhen, Guangdong, China

Tel: +(86) 0755-8259 1330 | E-mail: webmaster@lcs-cert.com | www.lcs-cert.com

Scan code to check authenticity





Attachment No.1

IEC 62368-1 _ ATTACHMENT			
Clause	Requirement + Test	Result - Remark	Verdict
	<p>This standard is transitioning from short-term based (30 s) requirements to long-term based (40 hour) requirements. These clauses remain in effect only for devices that do not comply with sound dose estimation as stipulated in EN 50332-3.</p> <p>For classifying the acoustic output $LA_{eq,T}$, measurements are based on the A-weighted equivalent sound pressure level over a 30 s period.</p> <p>For music where the average sound pressure (long term $LA_{eq,T}$) measured over the duration of the song is lower than the average produced by the programme simulation noise, measurements may be done over the duration of the complete song. In this case, T becomes the duration of the song.</p> <p>NOTE Classical music, acoustic music and broadcast typically has an average sound pressure (long term $LA_{eq,T}$) which is much lower than the average programme simulation noise. Therefore, if the player is capable to analyse the content and compare it with the programme simulation noise, the warning does not need to be given as long as the average sound pressure of the song does not exceed the required limit.</p> <p>For example, if the player is set with the programme simulation noise to 85 dB, but the average music level of the song is only 65 dB, there is no need to give a warning or ask an acknowledgement as long as the average sound level of the song is not above the basic limit of 85 dB.</p>		
10.6.2.2	<p>RS1 limits (to be superseded, see 10.6.3.2)</p> <p>RS1 is a class 1 acoustic energy source that does not exceed the following:</p> <ul style="list-style-type: none"> – for equipment provided as a package (player with its listening device), and with a proprietary connector between the player and its listening device, or where the combination of player and listening device is known by other means such as setting or automatic detection, the $LA_{eq,T}$ acoustic output shall be ≤ 85 dB when playing the fixed “programme simulation noise” described in EN 50332-1. – for equipment provided with a standardized connector (for example, a 3,5 phone jack) that allows connection to a listening device for general use, the unweighted r.m.s. output voltage shall be ≤ 27 mV (analogue interface) or -25 dBFS (digital 		N/A





Attachment No.1

IEC 62368-1 _ ATTACHMENT			
Clause	Requirement + Test	Result - Remark	Verdict
	interface) when playing the fixed “programme simulation noise” described in EN 50332-1. – The RS1 limits will be updated for all devices as per 10.6.3.2.		
10.6.2.3	RS2 limits (to be superseded, see 10.6.3.3) RS2 is a class 2 acoustic energy source that does not exceed the following: – for equipment provided as a package (player with its listening device), and with a proprietary connector between the player and its listening device, or when the combination of player and listening device is known by other means such as setting or automatic 130 detection, the $LA_{eq,T}$ acoustic output shall be ≤ 100 dB(A) when playing the fixed “programme simulation noise” as described in EN 50332-1. – for equipment provided with a standardized connector (for example, a 3,5 phone jack) that allows connection to a listening device for general use, the unweighted r.m.s. output voltage shall be ≤ 150 mV (analogue interface) or -10 dBFS (digital interface) when playing the fixed “programme simulation noise” as described in EN 50332-1.		N/A
10.6.2.4	RS3 limits RS3 is a class 3 acoustic energy source that exceeds RS2 limits.		N/A
10.6.3	Classification of devices (new)		
10.6.3.1	General Previous limits (10.6.2) created abundant false negative and false positive PMP sound level warnings. New limits, compliant with The Commission Decision of 23 June 2009, are given below.		N/A
10.6.3.2	RS1 limits (new) RS1 is a class 1 acoustic energy source that does not exceed the following: – for equipment provided as a package (player with its listening device), and with a proprietary connector between the player and its listening device, or where the combination of player and listening device is known by other means such as setting or automatic detection, the $LA_{eq,T}$ acoustic output shall be ≤ 80 dB when playing the fixed “programme simulation noise” described in EN 50332-1. – for equipment provided with a standardized		N/A



Shenzhen LCS Compliance Testing Laboratory Ltd.

Add: Room 101, 201, Building A and Room 301, Building C, Juji Industrial Park, Yabianxueziwei, Shajing Street, Bao'an District, Shenzhen, Guangdong, China

Tel: +(86) 0755-8259 1330 | E-mail: webmaster@lcs-cert.com | www.lcs-cert.com

Scan code to check authenticity



Attachment No.1

IEC 62368-1 _ ATTACHMENT			
Clause	Requirement + Test	Result - Remark	Verdict
	connector (for example, a 3,5 phone jack) that allows connection to a listening device for general use, the unweighted r.m.s. output voltage shall be ≤ 15 mV (analogue interface) or -30 dBFS (digital interface) when playing the fixed "programme simulation noise" described in EN 50332-1.		
10.6.3.3	<p>RS2 limits (new)</p> <p>RS2 is a class 2 acoustic energy source that does not exceed the following:</p> <ul style="list-style-type: none"> – for equipment provided as a package (player with its listening device), and with a proprietary connector between the player and its listening device, or where the combination of player and listening device is known by other means such as setting or automatic detection, the weekly sound exposure level, as described in EN 50332-3, shall be ≤ 80 dB when playing the fixed "programme simulation noise" described in EN 50332-1. – for equipment provided with a standardized connector (for example, a 3,5 phone jack) that allows connection to a listening device for general use, the unweighted r.m.s. output level, integrated over one week, as described in EN50332-3, shall be ≤ 15 mV (analogue interface) or -30 dBFS (digital interface) when playing the fixed "programme simulation noise" described in EN 50332-1. 		N/A
10.6.4	Requirements for maximum sound exposure		N/A
10.6.4.1	<p>Measurement methods</p> <p>All volume controls shall be turned to maximum during tests.</p> <p>Measurements shall be made in accordance with EN 50332-1 or EN 50332-2 as applicable.</p>		N/A
10.6.4.2	<p>Protection of persons</p> <p>Except as given below, protection requirements for parts accessible to ordinary persons, instructed persons and skilled persons are given in 4.3.</p> <p>NOTE 1 Volume control is not considered a safeguard.</p> <p>Between RS2 and an ordinary person, the basic safeguard may be replaced by an instructional safeguard in accordance with Clause F.5, except that the instructional safeguard shall be placed on the equipment, or on the packaging, or in the instruction manual.</p>		N/A



Shenzhen LCS Compliance Testing Laboratory Ltd.


Add: Room 101, 201, Building A and Room 301, Building C, Juji Industrial Park, Yabianxueziwei, Shajing Street, Bao'an District, Shenzhen, Guangdong, China

Tel: +(86) 0755-8259 1330 | E-mail: webmaster@lcs-cert.com | www.lcs-cert.com

Scan code to check authenticity



Attachment No.1

IEC 62368-1 _ ATTACHMENT			
Clause	Requirement + Test	Result - Remark	Verdict
	<p>Alternatively, the instructional safeguard may be given through the equipment display during use.</p> <p>The elements of the instructional safeguard shall be as follows:</p> <p>– element 1a: the symbol , IEC 60417-6044 (2011-01)</p> <p>– element 2: “High sound pressure” or equivalent wording</p> <p>– element 3: “Hearing damage risk” or equivalent wording</p> <p>– element 4: “Do not listen at high volume levels for long periods.” or equivalent wording</p> <p>An equipment safeguard shall prevent exposure of an ordinary person to an RS2 source without intentional physical action from the ordinary person and shall automatically return to an output level not exceeding what is specified for an RS1 source when the power is switched off.</p> <p>The equipment shall provide a means to actively inform the user of the increased sound level when the equipment is operated with an output exceeding RS1. Any means used shall be acknowledged by the user before activating a mode of operation which allows for an output exceeding RS1. The acknowledgement does not need to be repeated more than once every 20 h of cumulative listening time.</p> <p>NOTE 2 Examples of means include visual or audible signals. Action from the user is always needed.</p> <p>NOTE 3 The 20 h listening time is the accumulative listening time, independent of how often and how long the personal music player has been switched off.</p> <p>A skilled person shall not be unintentionally exposed to RS3.</p>		
10.6.5	Requirements for dose-based systems		N/A
10.6.5.1	<p>General requirements</p> <p>Personal music players shall give the warnings as provided below when tested according to EN 50332-3, using the limits from this clause.</p>		N/A





Attachment No.1

IEC 62368-1 _ ATTACHMENT			
Clause	Requirement + Test	Result - Remark	Verdict
	<p>The manufacturer may offer optional settings to allow the users to modify when and how they wish to receive the notifications and warnings to promote a better user experience without defeating the safeguards. This allows the users to be informed in a method that best meets their physical capabilities and device usage needs. If such optional settings are offered, an administrator (for example, parental restrictions, business/educational administrators, etc.) shall be able to lock any optional settings into a specific configuration.</p> <p>The personal music player shall be supplied with easy to understand explanation to the user of the dose management system, the risks involved, and how to use the system safely. The user shall be made aware that other sources may significantly contribute to their sound exposure, for example work, transportation, concerts, clubs, cinema, car races, etc.</p>		
10.6.5.2	<p>Dose-based warning and requirements</p> <p>When a dose of 100 % <i>CSD</i> is reached, and at least at every 100 % further increase of <i>CSD</i>, the device shall warn the user and require an acknowledgement. In case the user does not acknowledge, the output level shall automatically decrease to compliance with class RS1.</p> <p>The warning shall at least clearly indicate that listening above 100 % <i>CSD</i> leads to the risk of hearing damage or loss.</p>		N/A
10.6.5.3	<p>Exposure-based requirements</p> <p>With only dose-based requirements, cause and effect could be far separated in time, defying the purpose of educating users about safe listening practice. In addition to dose-based requirements, a PMP shall therefore also put a limit to the short-term sound level a user can listen at.</p> <p>The exposure-based limiter (EL) shall automatically reduce the sound level not to exceed 100 dB(A) or 150 mV integrated over the past 180 s, based on methodology defined in EN 50332-3.</p> <p>The EL settling time (time from starting level reduction to reaching target output) shall be 10 s or faster.</p> <p>Test of EL functionality is conducted according to</p>		N/A



Shenzhen LCS Compliance Testing Laboratory Ltd.

Add: Room 101, 201, Building A and Room 301, Building C, Juji Industrial Park, Yabianxueziwei, Shajing Street, Bao'an District, Shenzhen, Guangdong, China

Tel: +(86) 0755-8259 1330 | E-mail: webmaster@lcs-cert.com | www.lcs-cert.com

Scan code to check authenticity



Attachment No.1

IEC 62368-1 _ ATTACHMENT			
Clause	Requirement + Test	Result - Remark	Verdict
	<p>EN 50332-3, using the limits from this clause. For equipment provided as a package (player with its listening device), the level integrated over 180 s shall be 100 dB or lower. For equipment provided with a standardized connector, the unweighted level integrated over 180 s shall be no more than 150 mV for an analogue interface and no more than -10 dBFS for a digital interface.</p> <p>NOTE In case the source is known not to be music (or test signal), the EL may be disabled.</p>		

10.6.6	Requirements for listening devices (headphones, earphones, etc.)		N/A
10.6.6.1	<p>Corded listening devices with analogue input</p> <p>With 94 dB LAeq acoustic pressure output of the listening device, and with the volume and sound settings in the listening device (for example, built-in volume level control, additional sound features like equalization, etc.) set to the combination of positions that maximize the measured acoustic output, the input voltage of the listening device when playing the fixed “programme simulation noise” as described in EN 50332-1 shall be ≥ 75 mV.</p> <p>NOTE The values of 94 dB and 75 mV correspond with 85 dB and 27 mV or 100 dB and 150 mV.</p>		N/A
10.6.6.2	<p>Corded listening devices with digital input</p> <p>With any playing device playing the fixed “programme simulation noise” described in EN 50332-1, and with the volume and sound settings in the listening device (for example, built-in volume level control, additional sound features like equalization, etc.) set to the combination of positions that maximize the measured acoustic output, the LAeq, T acoustic output of the listening device shall be ≤ 100 dB with an input signal of -10 dBFS.</p>		N/A
10.6.6.3	<p>Cordless listening devices</p> <p>In cordless mode,</p> <ul style="list-style-type: none"> – with any playing and transmitting device playing the fixed programme simulation noise described in EN 50332-1; and – respecting the cordless transmission standards, where an air interface standard exists that specifies the equivalent acoustic level; and – with volume and sound settings in the receiving 		N/A





Attachment No.1

IEC 62368-1 _ ATTACHMENT																																																															
Clause	Requirement + Test	Result - Remark	Verdict																																																												
	device (for example, built-in volume level control, additional sound features like equalization, etc.) set to the combination of positions that maximize the measured acoustic output for the above mentioned programme simulation noise, the $L_{Aeq,T}$ acoustic output of the listening device shall be ≤ 100 dB with an input signal of -10 dBFS.																																																														
10.6.6.4	Measurement method <i>Measurements shall be made in accordance with EN 50332-2 as applicable.</i>		N/A																																																												
3	Modification to the whole document		P																																																												
	Delete all the "country" notes in the reference document according to the following list: <table border="1" data-bbox="352 887 1286 1659"> <tbody> <tr> <td>0.2.1</td> <td>Note 1 and 2</td> <td>1</td> <td>Note 4 and 5</td> <td>3.3.8.1</td> <td>Note 2</td> </tr> <tr> <td>3.3.8.3</td> <td>Note 1</td> <td>4.1.15</td> <td>Note</td> <td>4.7.3</td> <td>Note 1 and 2</td> </tr> <tr> <td>5.2.2.2</td> <td>Note</td> <td>5.4.2.3.2.2 Table 12</td> <td>Note c</td> <td>5.4.2.3.2.4</td> <td>Note 1 and 3</td> </tr> <tr> <td>5.4.2.3.2.4 Table 13</td> <td>Note 2</td> <td>5.4.2.5</td> <td>Note 2</td> <td>5.4.5.1</td> <td>Note</td> </tr> <tr> <td>5.4.10.2.1</td> <td>Note</td> <td>5.4.10.2.2</td> <td>Note</td> <td>5.4.10.2.3</td> <td>Note</td> </tr> <tr> <td>5.5.2.1</td> <td>Note</td> <td>5.5.6</td> <td>Note</td> <td>5.6.4.2.1</td> <td>Note 2 and 3 and 4</td> </tr> <tr> <td>5.6.8</td> <td>Note 2</td> <td>5.7.6</td> <td>Note</td> <td>5.7.7.1</td> <td>Note 1 and Note 2</td> </tr> <tr> <td>8.5.4.2.3</td> <td>Note</td> <td>10.2.1 Table 39</td> <td>Note 3 and 4 and 5</td> <td>10.5.3</td> <td>Note 2</td> </tr> <tr> <td>10.6.1</td> <td>Note 3</td> <td>F.3.3.6</td> <td>Note 3</td> <td>Y.4.1</td> <td>Note</td> </tr> <tr> <td>Y.4.5</td> <td>Note</td> <td></td> <td></td> <td></td> <td></td> </tr> </tbody> </table>	0.2.1	Note 1 and 2	1	Note 4 and 5	3.3.8.1	Note 2	3.3.8.3	Note 1	4.1.15	Note	4.7.3	Note 1 and 2	5.2.2.2	Note	5.4.2.3.2.2 Table 12	Note c	5.4.2.3.2.4	Note 1 and 3	5.4.2.3.2.4 Table 13	Note 2	5.4.2.5	Note 2	5.4.5.1	Note	5.4.10.2.1	Note	5.4.10.2.2	Note	5.4.10.2.3	Note	5.5.2.1	Note	5.5.6	Note	5.6.4.2.1	Note 2 and 3 and 4	5.6.8	Note 2	5.7.6	Note	5.7.7.1	Note 1 and Note 2	8.5.4.2.3	Note	10.2.1 Table 39	Note 3 and 4 and 5	10.5.3	Note 2	10.6.1	Note 3	F.3.3.6	Note 3	Y.4.1	Note	Y.4.5	Note						P
0.2.1	Note 1 and 2	1	Note 4 and 5	3.3.8.1	Note 2																																																										
3.3.8.3	Note 1	4.1.15	Note	4.7.3	Note 1 and 2																																																										
5.2.2.2	Note	5.4.2.3.2.2 Table 12	Note c	5.4.2.3.2.4	Note 1 and 3																																																										
5.4.2.3.2.4 Table 13	Note 2	5.4.2.5	Note 2	5.4.5.1	Note																																																										
5.4.10.2.1	Note	5.4.10.2.2	Note	5.4.10.2.3	Note																																																										
5.5.2.1	Note	5.5.6	Note	5.6.4.2.1	Note 2 and 3 and 4																																																										
5.6.8	Note 2	5.7.6	Note	5.7.7.1	Note 1 and Note 2																																																										
8.5.4.2.3	Note	10.2.1 Table 39	Note 3 and 4 and 5	10.5.3	Note 2																																																										
10.6.1	Note 3	F.3.3.6	Note 3	Y.4.1	Note																																																										
Y.4.5	Note																																																														
4	Modification to Clause 1		P																																																												
1	Add the following note: <i>NOTE Z1 The use of certain substances in electrical and electronic equipment is restricted within the EU: see Directive 2011/65/EU.</i>		P																																																												

5	Modification to 4.Z1		N/A
----------	-----------------------------	--	-----





Attachment No.1

IEC 62368-1 _ ATTACHMENT			
Clause	Requirement + Test	Result - Remark	Verdict
4.Z1	<p>Add the following new subclause after 4.9:</p> <p>To protect against excessive current, short-circuits and earth faults in circuits connected to an a.c. mains, protective devices shall be included either as integral parts of the equipment or as parts of the building installation, subject to the following, a), b) and c):</p> <p>a) except as detailed in b) and c), protective devices necessary to comply with the requirements of B.3.1 and B.4 shall be included as parts of the equipment;</p> <p>b) for components in series with the mains input to the equipment such as the supply cord, appliance coupler, r.f.i. filter and switch, short-circuit and earth fault protection may be provided by protective devices in the building installation;</p> <p>c) it is permitted for pluggable equipment type B or permanently connected equipment, to rely on dedicated overcurrent and short-circuit protection in the building installation, provided that the means of protection, e.g. fuses or circuit breakers, is fully specified in the installation instructions.</p> <p>If reliance is placed on protection in the building installation, the installation instructions shall so state, except that for pluggable equipment type A the building installation shall be regarded as providing protection in accordance with the rating of the wall socket outlet.</p>		N/A
6	Modification to 5.4.2.3.2.4		N/A
5.4.2.3.2.4	<p>Add the following to the end of this subclause:</p> <p>The requirement for interconnection with external circuit is in addition given in EN 51291-3:2009.</p>		N/A
7	Modification to 10.2.1		N/A
10.2.1	<p>Add the following to ^{c)} and ^{d)} in table 39:</p> <p>For additional requirements, see 10.5.1.</p>		N/A
8	Modification to 10.5.1		N/A
10.5.1	<p>Add the following after the first paragraph:</p> <p>For RS 1 compliance is checked by measurement under the following conditions:</p> <p>In addition to the normal operating conditions, all controls adjustable from the outside by hand, by any object such as a tool or a coin, and those</p>		N/A





Attachment No.1

IEC 62368-1 _ ATTACHMENT			
Clause	Requirement + Test	Result - Remark	Verdict
	<p>internal adjustments or pre-sets which are not locked in a reliable manner, are adjusted so as to give maximum radiation whilst maintaining an intelligible picture for 1 h, at the end of which the measurement is made.</p> <p>NOTE Z1 Soldered joints and paint lockings are examples of adequate locking.</p> <p>The dose-rate is determined by means of a radiation monitor with an effective area of 10 cm², at any point 10 cm from the outer surface of the apparatus.</p> <p>Moreover, the measurement shall be made under fault conditions causing an increase of the high voltage, provided an intelligible picture is maintained for 1 h, at the end of which the measurement is made.</p> <p>For RS1, the dose-rate shall not exceed 1 μSv/h taking account of the background level.</p> <p>NOTE Z2 These values appear in Directive 96/29/Euratom of 13 May 1996.</p>		
9	Modification to G.7.1		N/A
G.7.1	<p>Add the following note:</p> <p>NOTE Z1 The harmonized code designations corresponding to the IEC cord types are given in Annex ZD.</p>		N/A
10	Modification to Bibliography		N/A





Attachment No.1

IEC 62368-1 _ ATTACHMENT			
Clause	Requirement + Test	Result - Remark	Verdict

	<p>Add the following notes for the standards indicated:</p> <p>IEC 60130-9 NOTE Harmonized as EN 60130-9. IEC 60269-2 NOTE Harmonized as HD 60269-2. IEC 60309-1 NOTE Harmonized as EN 60309-1. IEC 60364 NOTE some parts harmonized in HD 384/HD 60364 series. IEC 60601-2-4 NOTE Harmonized as EN 60601-2-4. IEC 60664-5 NOTE Harmonized as EN 60664-5. IEC 61032:1997 NOTE Harmonized as EN 61032:1998 (not modified). IEC 61508-1 NOTE Harmonized as EN 61508-1. IEC 61558-2-1 NOTE Harmonized as EN 61558-2-1. IEC 61558-2-4 NOTE Harmonized as EN 61558-2-4. IEC 61558-2-6 NOTE Harmonized as EN 61558-2-6. IEC 61643-1 NOTE Harmonized as EN 61643-1. IEC 61643-21 NOTE Harmonized as EN 61643-21. IEC 61643-311 NOTE Harmonized as EN 61643-311. IEC 61643-321 NOTE Harmonized as EN 61643-321. IEC 61643-331 NOTE Harmonized as EN 61643-331.</p>		N/A
11	ADDITION OF ANNEXES		N/A
ZB	ANNEX ZB, SPECIAL NATIONAL CONDITIONS (EN)		N/A
4.1.15	<p>Denmark, Finland, Norway and Sweden</p> <p>To the end of the subclause the following is added: Class I pluggable equipment type A intended for connection to other equipment or a network shall, if safety relies on connection to reliable earthing or if surge suppressors are connected between the network terminals and accessible parts, have a marking stating that the equipment shall be connected to an earthed mains socket-outlet.</p> <p>The marking text in the applicable countries shall be as follows: In Denmark: "Apparatets stikprop skal tilsluttes en stikkontakt med jord som giver forbindelse til stikproppens jord." In Finland: "Laite on liitettävä suojakoskettimilla varustettuun pistorasiaan" In Norway: "Apparatet må tilkoples jordet stikkontakt" In Sweden: "Apparaten skall anslutas till jordat uttag"</p>		N/A





Attachment No.1

IEC 62368-1 _ ATTACHMENT			
Clause	Requirement + Test	Result - Remark	Verdict
4.7.3	<p>United Kingdom</p> <p>To the end of the subclause the following is added:</p> <p>The torque test is performed using a socket-outlet complying with BS 1363, and the plug part shall be assessed to the relevant clauses of BS 1363. Also see Annex G.4.2 of this annex</p>		N/A
5.2.2.2	<p>Denmark</p> <p>After the 2nd paragraph add the following:</p> <p>A warning (marking safeguard) for high touch current is required if the touch current exceeds the limits of 3,5 mA a.c. or 10 mA d.c.</p>		N/A
5.4.11.1 and Annex G	<p>Finland and Sweden</p> <p>To the end of the subclause the following is added:</p> <p>For separation of the telecommunication network from earth the following is applicable:</p> <p>If this insulation is solid, including insulation forming part of a component, it shall at least consist of either</p> <ul style="list-style-type: none"> • two layers of thin sheet material, each of which shall pass the electric strength test below, or • one layer having a distance through insulation of at least 0,4 mm, which shall pass the electric strength test below. <p>If this insulation forms part of a semiconductor component (e.g. an optocoupler), there is no distance through insulation requirement for the insulation consisting of an insulating compound completely filling the casing, so that clearances and creepage distances do not exist, if the component passes the electric strength test in accordance with the compliance clause below and in addition</p> <ul style="list-style-type: none"> • passes the tests and inspection criteria of 5.4.8 with an electric strength test of 1,5 kV multiplied by 1,6 (the electric strength test of 5.4.9 shall be performed using 1,5 kV), <p>and</p> <ul style="list-style-type: none"> • is subject to routine testing for electric strength during manufacturing, using a test voltage of 1,5 kV. 		N/A



Shenzhen LCS Compliance Testing Laboratory Ltd.

Add: Room 101, 201, Building A and Room 301, Building C, Juji Industrial Park, Yabianxueziwei, Shajing Street, Bao'an District, Shenzhen, Guangdong, China

Tel: +(86) 0755-8259 1330 | E-mail: webmaster@lcs-cert.com | www.lcs-cert.com

Scan code to check authenticity



Attachment No.1

IEC 62368-1 _ ATTACHMENT			
Clause	Requirement + Test	Result - Remark	Verdict
	<p>It is permitted to bridge this insulation with a capacitor complying with EN 60384-14:2005, subclass Y2.</p> <p>A capacitor classified Y3 according to EN 60384-14:2005, may bridge this insulation under the following conditions:</p> <ul style="list-style-type: none"> the insulation requirements are satisfied by having a capacitor classified Y3 as defined by EN 60384-14, which in addition to the Y3 testing, is tested with an impulse test of 2,5 kV defined in 5.4.11; the additional testing shall be performed on all the test specimens as described in EN 60384-14; <p>the impulse test of 2,5 kV is to be performed before the endurance test in EN 60384-14, in the sequence of tests as described in EN 60384-14.</p>		
5.5.2.1	<p>Norway</p> <p>After the 3rd paragraph the following is added:</p> <p>Due to the IT power system used, capacitors are required to be rated for the applicable line-to-line voltage (230 V).</p>		N/A
5.5.6	<p>Finland, Norway and Sweden</p> <p>To the end of the subclause the following is added:</p> <p>Resistors used as basic safeguard or bridging basic insulation in class I pluggable equipment type A shall comply with G.10.1 and the test of G.10.2.</p>		N/A
5.6.1	<p>Denmark</p> <p>Add to the end of the subclause</p> <p>Due to many existing installations where the socket-outlets can be protected with fuses with higher rating than the rating of the socket-outlets the protection for pluggable equipment type A shall be an integral part of the equipment.</p> <p><i>Justification:</i></p> <p>In Denmark an existing 13 A socket outlet can be protected by a 20 A fuse.</p>		N/A



Shenzhen LCS Compliance Testing Laboratory Ltd.

Add: Room 101, 201, Building A and Room 301, Building C, Juji Industrial Park, Yabianxueziwei, Shajing Street, Bao'an District, Shenzhen, Guangdong, China

Tel: +(86) 0755-8259 1330 | E-mail: webmaster@lcs-cert.com | www.lcs-cert.com

Scan code to check authenticity





Attachment No.1

IEC 62368-1 _ ATTACHMENT			
Clause	Requirement + Test	Result - Remark	Verdict

5.6.4.2.1	<p>Ireland and United Kingdom</p> <p>After the indent for pluggable equipment type A, the following is added: – the protective current rating is taken to be 13 A, this being the largest rating of fuse used in the mains plug.</p>		N/A
5.6.4.2.1	<p>France</p> <p>After the indent for pluggable equipment type A, the following is added: – in certain cases, the protective current rating of the circuit supplied from the mains is taken as 20 A instead of 16 A.</p>		N/A
5.6.5.1	<p>To the second paragraph the following is added: The range of conductor sizes of flexible cords to be accepted by terminals for equipment with a rated current over 10 A and up to and including 13 A is: 1,25 mm² to 1,5 mm² in cross-sectional area.</p>		N/A
5.6.8	<p>Norway</p> <p>To the end of the subclause the following is added: Equipment connected with an earthed mains plug is classified as class I equipment. See the Norway marking requirement in 4.1.15. The symbol IEC 60417-6092, as specified in F.3.6.2, is accepted.</p>		N/A
5.7.6	<p>Denmark</p> <p>To the end of the subclause the following is added: The installation instruction shall be affixed to the equipment if the protective conductor current exceeds the limits of 3,5 mA a.c. or 10 mA d.c.</p>		N/A

5.7.6.2	<p>Denmark</p> <p>To the end of the subclause the following is added: The warning (marking safeguard) for high touch current is required if the touch current or the protective current exceed the limits of 3,5 mA .</p>		N/A
5.7.7.1	<p>Norway and Sweden</p> <p>To the end of the subclause the following is added: The screen of the television distribution system is normally not earthed at the entrance of the building and there is normally no equipotential bonding system within the building. Therefore the protective earthing of the building installation needs to be isolated from the screen of a cable distribution system.</p>		N/A





Attachment No.1

IEC 62368-1 _ ATTACHMENT			
Clause	Requirement + Test	Result - Remark	Verdict

	<p>It is however accepted to provide the insulation external to the equipment by an adapter or an interconnection cable with galvanic isolator, which may be provided by a retailer, for example.</p> <p>The user manual shall then have the following or similar information in Norwegian and Swedish language respectively, depending on in what country the equipment is intended to be used in:</p> <p>“Apparatus connected to the protective earthing of the building installation through the mains connection or through other apparatus with a connection to protective earthing – and to a television distribution system using coaxial cable, may in some circumstances create a fire hazard. Connection to a television distribution system therefore has to be provided through a device providing electrical isolation below a certain frequency range (galvanic isolator, see EN 60728-11)”</p> <p>NOTE In Norway, due to regulation for CATV-installations, and in Sweden, a galvanic isolator shall provide electrical insulation below 5 MHz. The insulation shall withstand a dielectric strength of 1,5 kV r.m.s., 50 Hz or 60 Hz, for 1 min.</p> <p>Translation to Norwegian (the Swedish text will also be accepted in Norway):</p> <p>“Apparater som er koplet til beskyttelsesjord via nettplugg og/eller via annet jordtilkoplet utstyr – og er tilkoplet et koaksialbasert kabel-TV nett, kan forårsake brannfare. For å unngå dette skal det ved tilkopling av apparater til kabel-TV nett installeres en galvanisk isolator mellom apparatet og kabel-TV nettet.”</p> <p>Translation to Swedish: ”Apparater som är kopplad till skyddsjord via jordat vägguttag och/eller via annan utrustning och samtidigt är kopplad till kabel-TV nät kan i vissa fall medföra risk för brand. För att undvika detta skall vid anslutning av apparaten till kabel-TV nät galvanisk isolator finnas mellan apparaten och kabel-TV nätet.”.</p>		
--	---	--	--





Attachment No.1

IEC 62368-1 _ ATTACHMENT			
Clause	Requirement + Test	Result - Remark	Verdict
8.5.4.2.3	<p>United Kingdom</p> <p>Add the following after the 2nd dash bullet in 3rd paragraph:</p> <p>An emergency stop system complying with the requirements of IEC 60204-1 and ISO 13850 is required where there is a risk of personal injury.</p>		N/A
B.3.1 and B.4	<p>Ireland and United Kingdom</p> <p>The following is applicable:</p> <p>To protect against excessive currents and short-circuits in the primary circuit of direct plug-in equipment, tests according to Annexes B.3.1 and B.4 shall be conducted using an external miniature circuit breaker complying with EN 60898-1, Type B, rated 32A. If the equipment does not pass these tests, suitable protective devices shall be included as an integral part of the direct plug-in equipment, until the requirements of Annexes B.3.1 and B.4 are met</p>		N/A
G.4.2	<p>Denmark</p> <p>To the end of the subclause the following is added:</p> <p>Supply cords of single phase appliances having a rated current not exceeding 13 A shall be provided with a plug according to DS 60884-2-D1:2011.</p> <p>CLASS I EQUIPMENT provided with socket-outlets with earth contacts or which are intended to be used in locations where protection against indirect contact is required according to the wiring rules shall be provided with a plug in accordance with standard sheet DK 2-1a or DK 2-5a.</p> <p>If a single-phase equipment having a RATED CURRENT exceeding 13 A or if a polyphase equipment is provided with a supply cord with a plug, this plug shall be in accordance with the standard sheets DK 6-1a in DS 60884-2-D1 or EN 60309-2.</p> <p>Mains socket outlets intended for providing power to Class II apparatus with a rated current of 2,5 A shall be in accordance DS 60884-2-D1:2011 standard sheet DKA 1-4a.</p> <p>Other current rating socket outlets shall be in compliance with Standard Sheet DKA 1-3a</p>		N/A





Attachment No.1

IEC 62368-1 _ ATTACHMENT

Clause	Requirement + Test	Result - Remark	Verdict
	<p>or DKA 1-1c.</p> <p>Mains socket-outlets with earth shall be in compliance with DS 60884-2-D1:2011 Standard Sheet DK 1-3a, DK 1-1c, DK1-1d, DK 1-5a or DK 1-7a</p> <p><i>Justification:</i> Heavy Current Regulations, Section 6c</p>		
G.4.2	<p>United Kingdom</p> <p>To the end of the subclause the following is added:</p> <p>The plug part of direct plug-in equipment shall be assessed to BS 1363: Part 1, 12.1, 12.2, 12.3, 12.9, 12.11, 12.12, 12.13, 12.16, and 12.17, except that the test of 12.17 is performed at not less than 125 °C. Where the metal earth pin is replaced by an Insulated Shutter Opening Device (ISOD), the requirements of clauses 22.2 and 23 also apply.</p>		N/A
G.7.1	<p>United Kingdom</p> <p>To the first paragraph the following is added:</p> <p>Equipment which is fitted with a flexible cable or cord and is designed to be connected to a mains socket conforming to BS 1363 by means of that flexible cable or cord shall be fitted with a 'standard plug' in accordance with the Plugs and Sockets etc. (Safety) Regulations 1994, Statutory Instrument 1994 No. 1768, unless exempted by those regulations.</p> <p>NOTE "Standard plug" is defined in SI 1768:1994 and essentially means an approved plug conforming to BS 1363 or an approved conversion plug.</p>		N/A
G.7.1	<p>Ireland</p> <p>To the first paragraph the following is added:</p> <p>Apparatus which is fitted with a flexible cable or cord shall be provided with a plug in accordance with Statutory Instrument 525: 1997, "13 A Plugs and Conversion Adapters for Domestic Use Regulations: 1997. S.I. 525 provides for the recognition of a standard of another Member State which is equivalent to the relevant Irish Standard</p>		N/A





Attachment No.1

IEC 62368-1 _ ATTACHMENT			
Clause	Requirement + Test	Result - Remark	Verdict
G.7.2	<p>Ireland and United Kingdom</p> <p>To the first paragraph the following is added:</p> <p>A power supply cord with a conductor of 1,25 mm² is allowed for equipment which is rated over 10 A and up to and including 13 A.</p>		N/A
ZC	ANNEX ZC, NATIONAL DEVIATIONS (EN)		N/A
10.5.2	<p>Germany</p> <p>The following requirement applies:</p> <p>For the operation of any cathode ray tube intended for the display of visual images operating at an acceleration voltage exceeding 40 kV, authorization is required, or application of type approval (Bauartzulassung) and marking.</p> <p><i>Justification:</i> German ministerial decree against ionizing radiation (Röntgenverordnung), in force since 2002-07-01, implementing the European Directive 96/29/EURATOM.</p> <p>NOTE Contact address: Physikalisch-Technische Bundesanstalt, Bundesallee 100, D-38116 Braunschweig, Tel.: Int+49-531-592-6320, Internet: http://www.ptb.de</p>		N/A





Attachment No.1

IEC 62368-1 _ ATTACHMENT			
Clause	Requirement + Test	Result - Remark	Verdict

ZD	IEC and CENELEC CODE DESIGNATIONS FOR FLEXIBLE CORDS (EN)		N/A	
	Type of flexible cord	Code designations		N/A
		IEC	CENELEC	
	PVC insulated cords			
	Flat twin tinsel cord	60227 IEC 41	H03VH-Y	
	Light polyvinyl chloride sheathed flexible cord	60227 IEC 52	H03VV-F H03VVH2-F	
	Ordinary polyvinyl chloride sheathed flexible cord	60227 IEC 53	H05VV-F H05VVH2-F	
	Rubber insulated cords			
	Braided cord	60245 IEC 51	H03RT-F	
	Ordinary tough rubber sheathed flexible cord	60245 IEC 53	H05RR-F	
	Ordinary polychloroprene sheathed flexible cord	60245 IEC 57	H05RN-F	
	Heavy polychloroprene sheathed flexible cord	60245 IEC 66	H07RN-F	
Cords having high flexibility				
Rubber insulated and sheathed cord	60245 IEC 86	H03RR-H		
Rubber insulated, crosslinked PVC sheathed cord	60245 IEC 87	H03RV4-H		
Crosslinked PVC insulated and sheathed cord	60245 IEC 88	H03V4V4-H		
Cords insulated and sheathed with halogen-free thermoplastic compounds				
Light halogen-free thermoplastic insulated and sheathed flexible cords		H03Z1Z1-F H03Z1Z1H2-F		
Ordinary halogen-free thermoplastic insulated and sheathed flexible cords		H05Z1Z1-F H05Z1Z1H2-F		

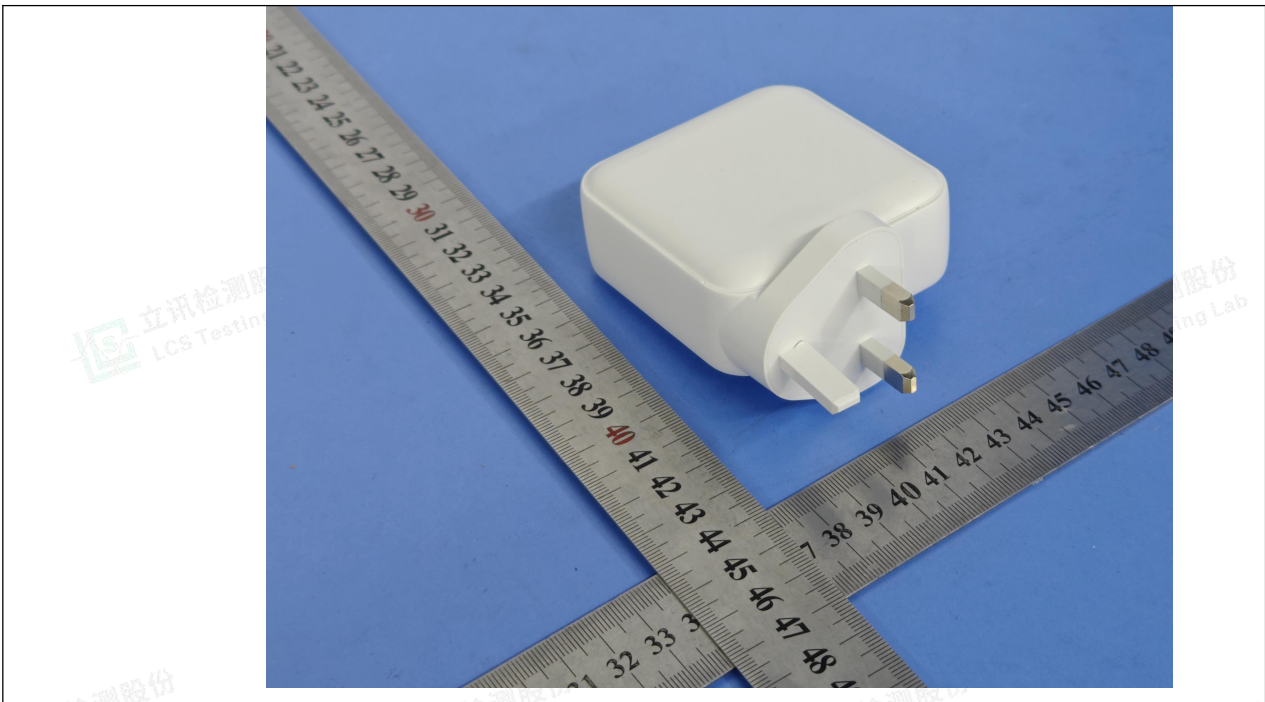




Details of: External View



Details of: External View

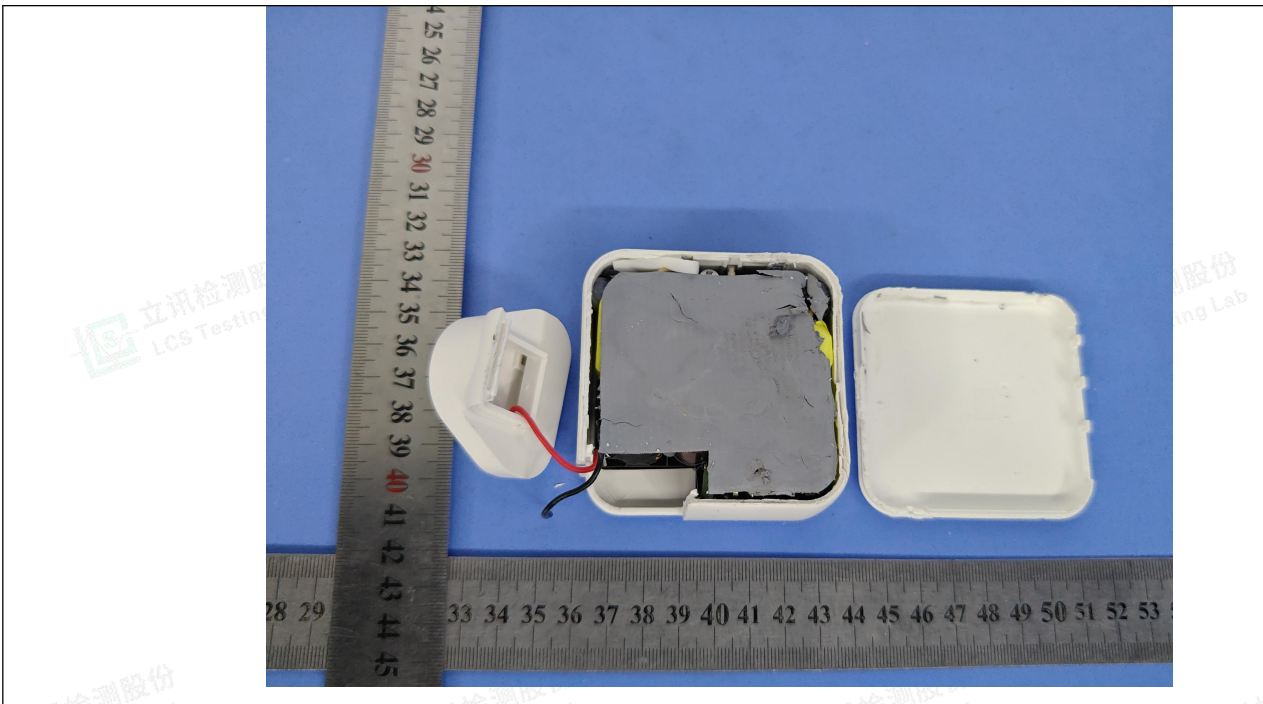




Details of: External View

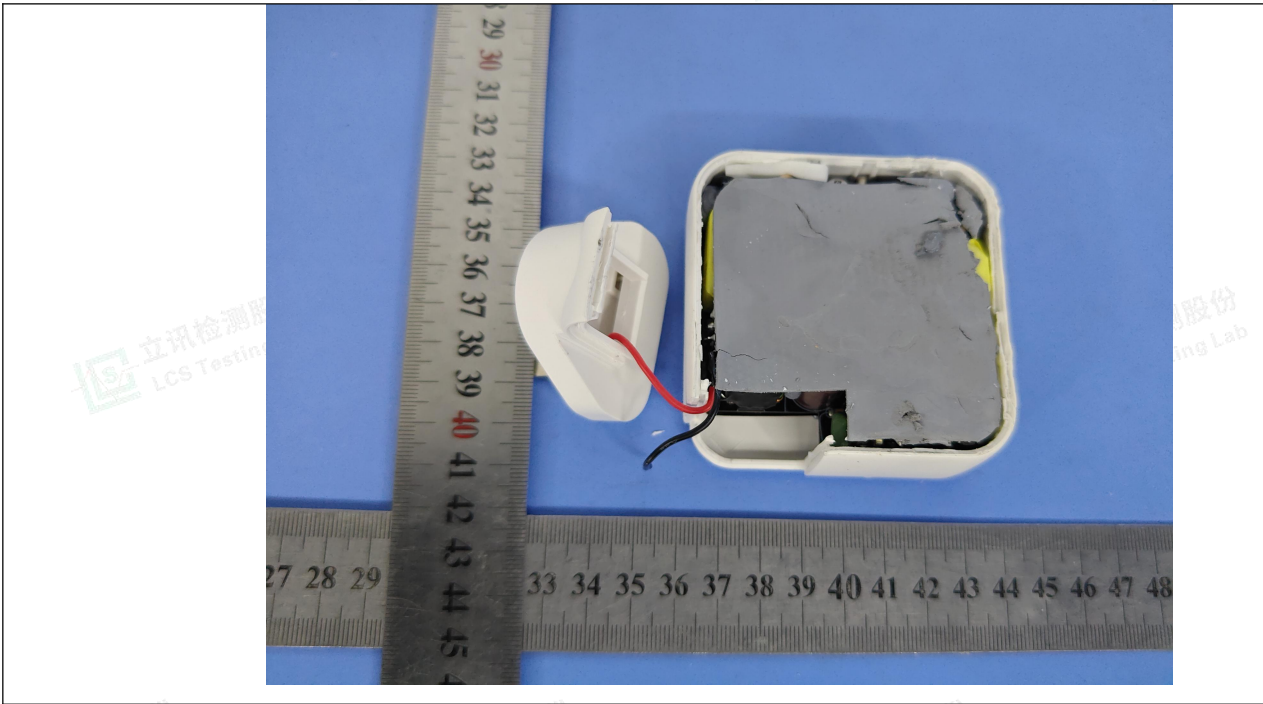


Details of: Internal View

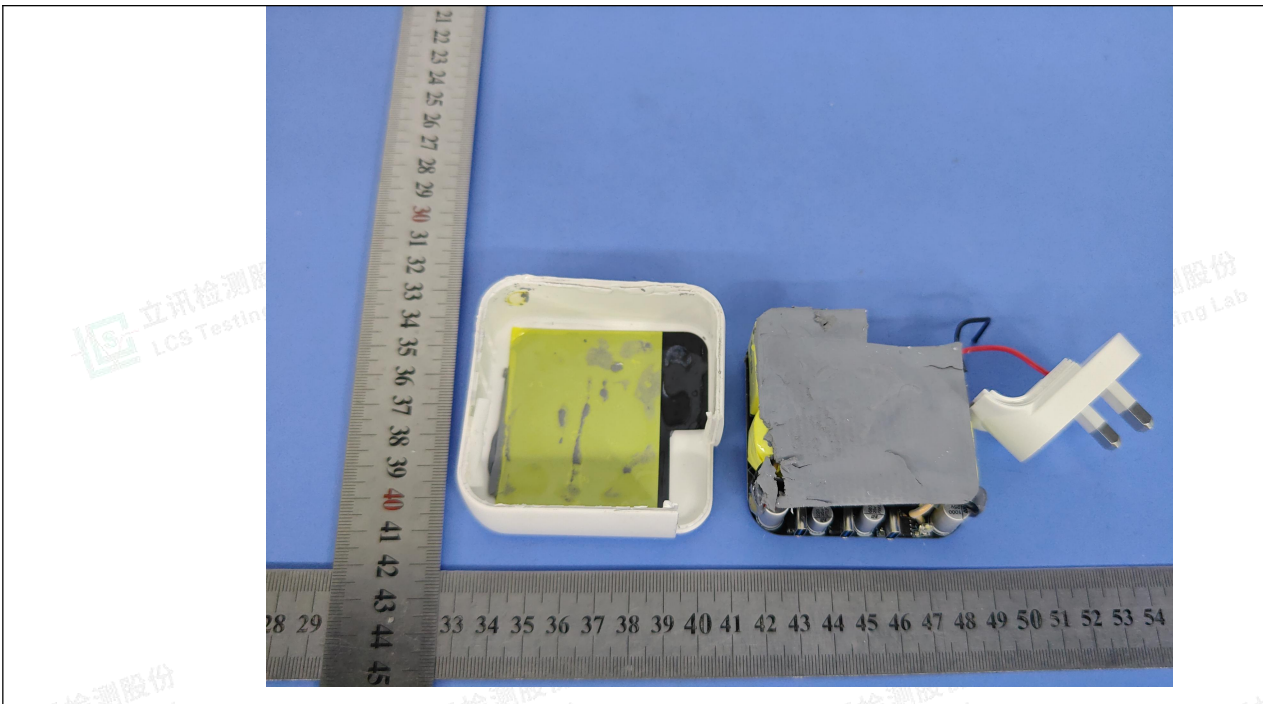




Details of: Internal View



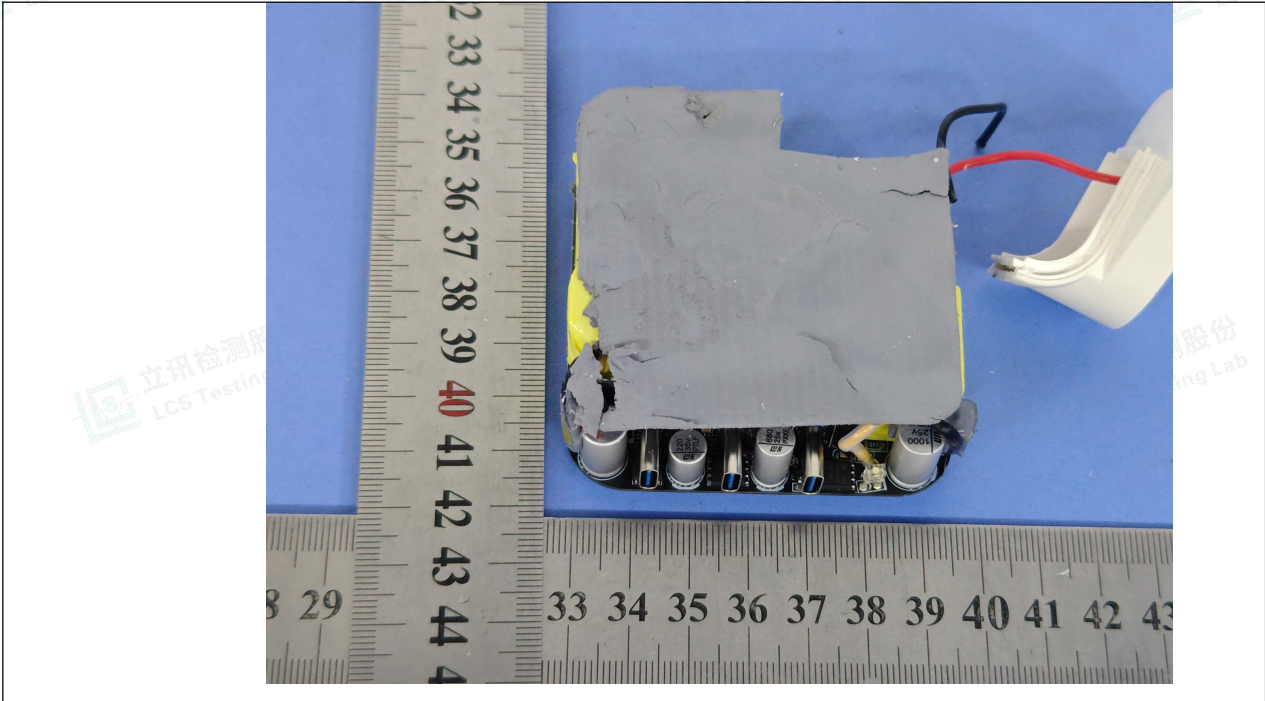
Details of: Internal View





Attachment No.2

Details of: PCB View



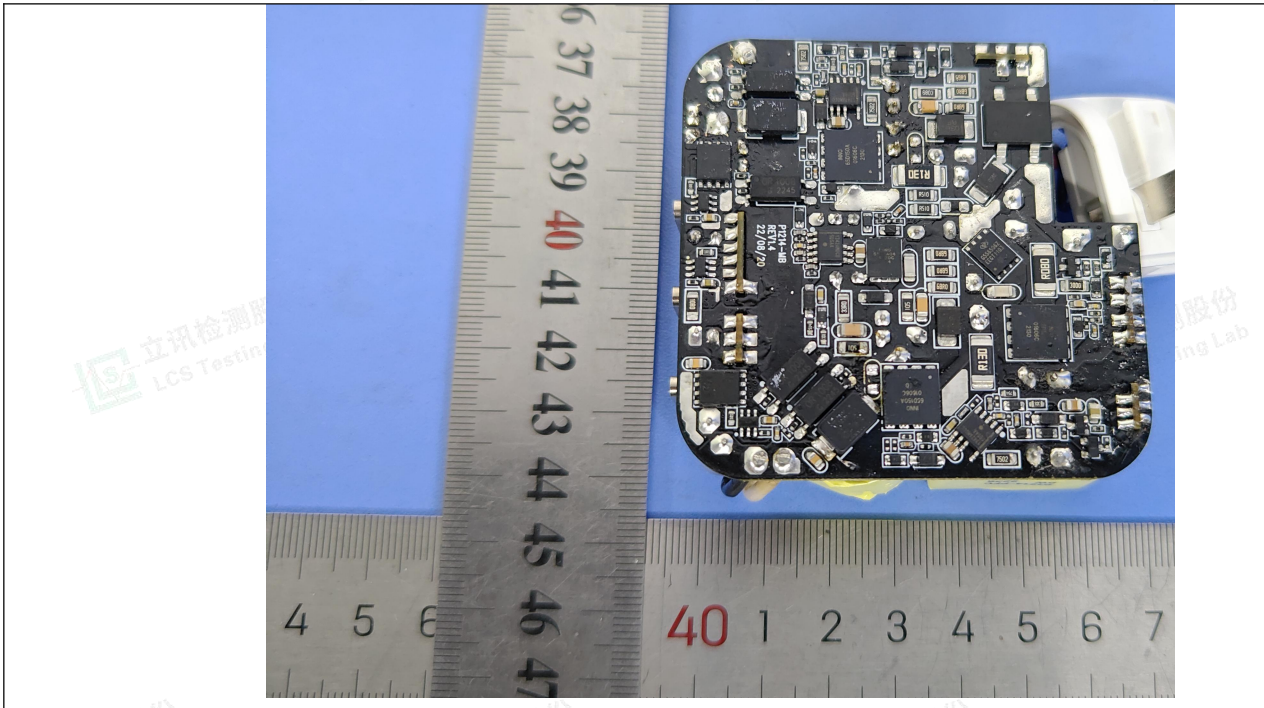
Details of: PCB View (remove glue)





Attachment No.2

Details of: PCB View (remove glue)



---End of Test report---

